



COLDWELL BANKER
GRUPPO BODINI

Gruppo Bodini
□ LECCE - Via 95 Reggimento Fanteria, 11
□ MAGLIE - Via Trento e Trieste, 22
□ GALLIPOLI - Corso Roma, 7
- 73100 Lecce (LE)
(+39) 0832 099369

Apartment for sale in Campi Salentina

€ 120.000

Ref. CBI069-613-132573



150 sq.m. | Bathrooms: 1 | Bedrooms: 2 | Rooms: 3

CAMPI SALENTINA - LECCE - SALENTO

A few steps away from the city centre, we offer for sale an apartment of about 135 square meters, with garage, located on the 2nd floor of a building with lift.

The house consists of entrance hall, large and bright living room, kitchen, two large-size bedrooms (a double bedroom and a single one) and one bathroom.

A large balcony of about 25 sqm can be accessed from the living area.

The property is completed by a good-sized storage room and a garage of about 15 square meters located on the ground floor.

Good internal condition.

Campi Salentina is 17 km from Lecce, 17 km from the Adriatic coast, 23 km from the beautiful beaches of Porto Cesareo and 40 km from Brindisi Airport.

Certification

Energy Class: E

EP_{glnr}: 64.11 kwh/□

Gruppo Bodini

□ LECCE - Via 95 Reggimento Fanteria, 11
□ MAGLIE - Via Trento e Trieste, 22
□ GALLIPOLI - Corso Roma, 7
- Lecce (LE) - (+39) 0832 099369
lecce@cbitaly.it - <https://www.coldwellbanker.it/en>
VAT 04954530962



Features

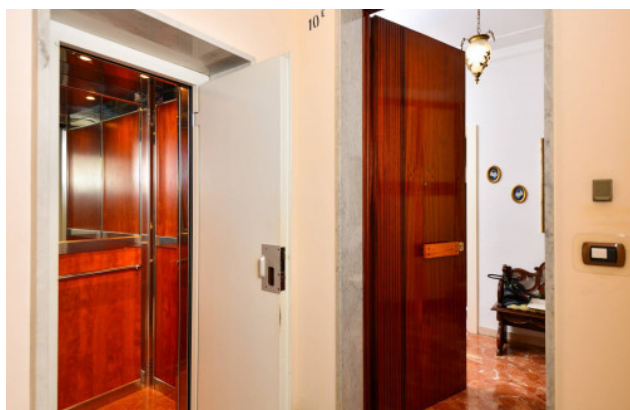
Property ID: CBI069-613-132573	Contract: Sale
Categoria: Apartment	Address: Via Nino di Palma
Zip Code: 73012	Municipality: Campi Salentina
Total sqm: 150 sq.m.	Bedrooms: 2
Bathrooms: 1	Rooms: 3
Internal condition: Good	Floor: 2
Total floors: 5	Independent heating: Heating
Lift: Yes	Date of construction: 1969
Current Status: Available after the deed of sale	Condominium costs: € 60
Balconies: Present	Sea distance: 19.000 meter
Kitchen: Regular Kitchen	Garage: for one car
Antenna : Independent	SAT Tv : Independent
High-speed internet connection	Fastweb connection
Air conditioning	Electric system : Compliant
Shower	Alluminium fixtures
Shutters	Airport distance
Shops distance or nearest city	

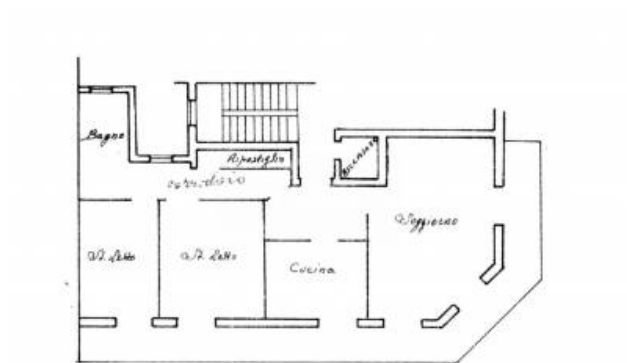
Nearby

Gyms	Beauty centres
Soccer fields	Sport centres
Tennis courts	Cycle paths
Playgrounds	Rail station
Public transports	Nursery school
Primary schools	Secondary schools
High school	Bar
Post offices	Shopping centres
Municipal office	



Gruppo Bodini
 □ LECCE - Via 95 Reggimento Fanteria, 11
 □ MAGLIE - Via Trento e Trieste, 22
 □ GALLIPOLI - Corso Roma, 7
 - Lecce (LE) - (+39) 0832 099369
 lecce@cbitaly.it - <https://www.coldwellbanker.it/en>
 VAT 04954530962





Gruppo Bodini

□ LECCE - Via 95 Reggimento Fanteria, 11

□ MAGLIE - Via Trento e Trieste, 22

□ GALLIPOLI - Corso Roma, 7

- Lecce (LE) - (+39) 0832 099369

lecce@cbitaly.it - <https://www.coldwellbanker.it/en>

VAT 04954530962