

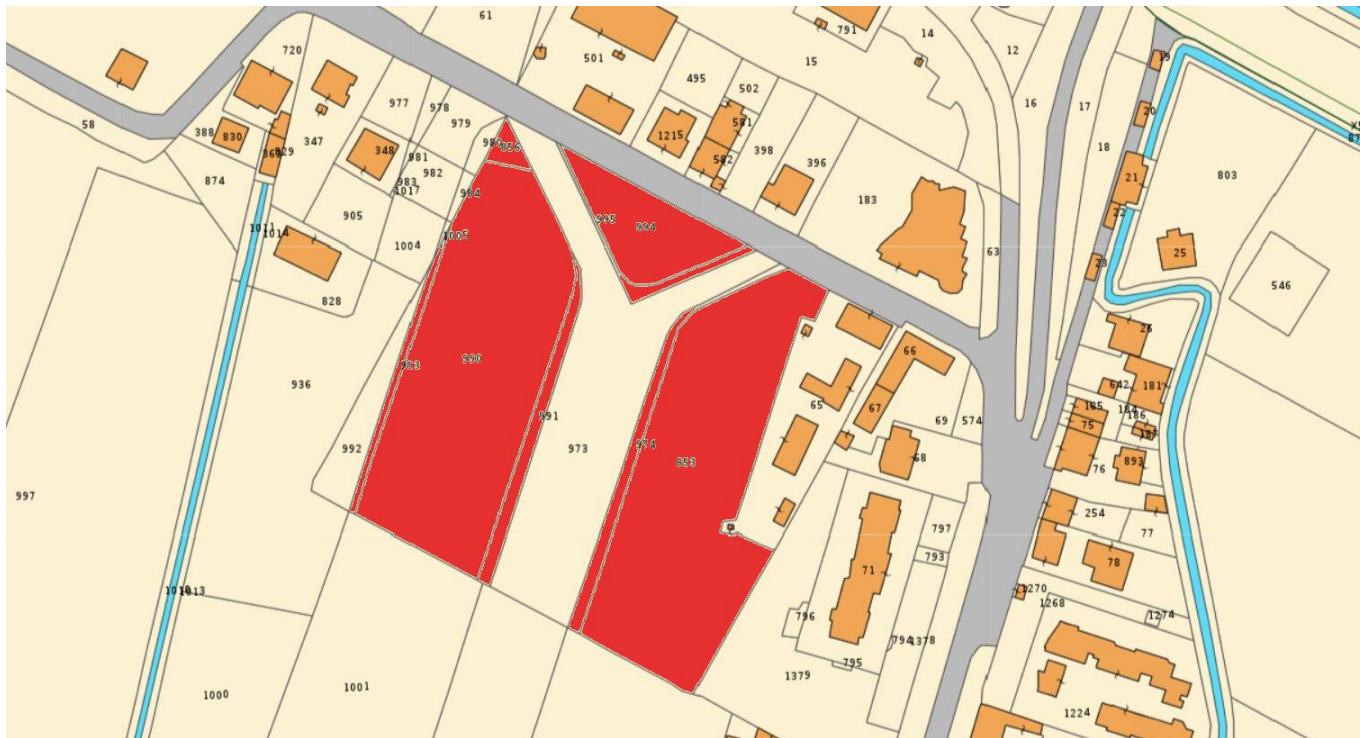


COLDWELL BANKER

BARBERA GROUP
INTERNATIONAL REAL ESTATE

Barbera Group International Real Estate
Via Panama, 22 - 00198 Roma (RM)
(+39) 06 8411681

Land for sale in Latina Latina Scalo € 3.500.000 Ref. CBI100-1185-290213



13.500 sq.m.

Latina Scalo □ Via Cupido

We offer for sale a building plot with a cubic volume of 33,000 cubic meters, located in a strategic position. The property in question is located, in fact, immediately in front of the Latina Scalo railway station, the main commercial hub and nerve center of the area and of central Italy.

The 33,000 m3 of building space have a mixed use and are divided as follows:

- approximately 25,000 cubic meters for commercial, banks and offices.
- 5500 cubic meters for residential.
- 3000 cubic meters for hotels.

Excellent investment for various purposes, given the excellent positioning and the multiple intended uses, with the possibility of creating various commercial, catering, administrative activities or large goods storage warehouses.

Features

Property ID: CBI100-1185-290213

Contract: Sale



COLDWELL BANKER

BARBERA GROUP
INTERNATIONAL REAL ESTATE

Barbera Group International Real Estate
Via Panama, 22 - 00198 Roma (RM)
(+39) 06 8411681

Categoria: Land

Address: via cupido, snc

Zip Code: 4013

Municipality: Latina

Zona: Latina Scalo

Total sqm: 13.500 sq.m.

Nearby

Gyms

Beauty centres

Soccer fields

Sport centres

Tennis courts

Cycle paths

Playgrounds

Rail station

Public transports

Nursery school

Primary schools

Secondary schools

High school

Bar

Post offices

Shopping centres

Municipal office



