



COLDWELL BANKER  
GRUPPO BODINI

Gruppo Bodini

□ LECCE - Via 95 Reggimento Fanteria, 11

□ MAGLIE - Via Trento e Trieste, 22

□ GALLIPOLI - Corso Roma, 7

- 73100 Lecce (LE)

0832 099369

## Indipendent house for sale in Campi Salentina

€ 115.000

Ref. CBI069-2123-132541



**212 sq.m. | Bathrooms: 3 | Bedrooms: 4 | Rooms: 6**

PUGLIA - SALENTO - CAMPI SALENTINA

In Campi Salentina, a town located just north of Lecce, we offer for sale a charming detached house, of approximately 200 m2, on two floors with typical star vaults and an open space behind.

The property has two entrances. The first entrance opens onto a room that can be used as an entrance, study or sitting room. From a comfortable hallway you can reach two bedrooms which overlook an open space behind of about 30 m2 and a bathroom. Subsequently you reach the kitchen, also overlooking the open space.

The second entrance opens onto an external atrium which leads directly to the first floor, also connected to the ground floor internally via a staircase. The first floor consists of a large and bright living room, equipped with the beautiful cement tiles typical of the 1950s. Below, we find a double bedroom with balcony and en-suite bathroom. A corridor leads to two other bedrooms, another double and a single with en-suite bathroom.

The property is completed by two large terraces, additional outdoor living spaces, which offer a panoramic view of the town centre.

The property needs a renovation that can bring to light the beauty of the home.

Campi Salentina is 17 km from Lecce, 17 km from the Adriatic coast, 23 km from the beautiful beaches of Porto Cesareo and 40 km from Brindisi Airport.

Gruppo Bodini

□ LECCE - Via 95 Reggimento Fanteria, 11

□ MAGLIE - Via Trento e Trieste, 22

□ GALLIPOLI - Corso Roma, 7

- Lecce (LE) - (+39) 0832 099369

lecce@cbitaly.it - <https://www.coldwellbanker.it/en>

VAT 04954530962



## Certification

Energy Class: G

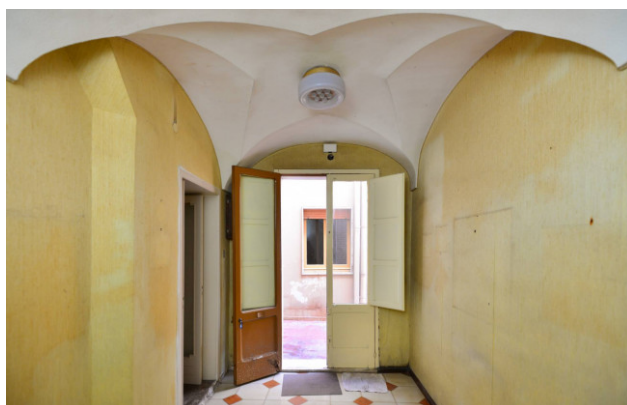
## Features

Property ID: CBI069-2123-132541	Contract: Sale
Categoria: Independent house	Address: Via Croce, 16
Zip Code: 73012	Municipality: Campi Salentina
Total sqm: 212 sq.m.	Livable surface: 200.00
Bedrooms: 4	Bathrooms: 3
Rooms: 6	Internal condition: To be renovated
Floor: Ground Floor	Total floors: 1
Current Status: Available after the deed of sale	Balconies: Present
Terrace: Present	Garden: Private, 30 sq.m.
Sea distance: 20.000 meter	Kitchen: Regular Kitchen
Electric system : Compliant with the building regulations of the time	Wooden fixtures
Airport distance	Summary description

## Nearby

Gyms	Beauty centres
Soccer fields	Sport centres
Tennis courts	Cycle paths
Playgrounds	Rail station
Public transports	Nursery school
Primary schools	Secondary schools
High school	Bar
Post offices	Shopping centres
Municipal office	





**Gruppo Bodini**  
 □ LECCE - Via 95 Reggimento Fanteria, 11  
 □ MAGLIE - Via Trento e Trieste, 22  
 □ GALLIPOLI - Corso Roma, 7  
 - Lecce (LE) - (+39) 0832 099369  
 lecce@cbitaly.it - <https://www.coldwellbanker.it/en>  
 VAT 04954530962







**Gruppo Bodini**

□ LECCE - Via 95 Reggimento Fanteria, 11

□ MAGLIE - Via Trento e Trieste, 22

□ GALLIPOLI - Corso Roma, 7

- Lecce (LE) - (+39) 0832 099369

lecce@chitaly.it - <https://www.coldwellbanker.it/en>

VAT 04954530962