



COLDWELL BANKER
GRUPPO BODINI

Gruppo Bodini

□ LECCE - Via 95 Reggimento Fanteria, 11

□ MAGLIE - Via Trento e Trieste, 22

□ GALLIPOLI - Corso Roma, 7

- 73100 Lecce (LE)

(+39) 0832 099369

Commercial Property for sale in Nardò

Torre Inserraglio

€ 480.000

Ref. CBI069-613-132539



480 sq.m. | Bathrooms: 3 | Rooms: 2

LECCE - NARDO' - TORRE INSERRAGLIO

Business activity location placed on the coastline between Porto Selvaggio and Sant'Isidoro that can be used as restaurant, bar and pizzeria now available for sale.

The property is 200 sqm and it is surrounded by a 4000sqm pine forest.

It welcomes us in a 400 sqm outdoor space with a barbecue corner that can be accessed from the parking area and which can be equipped with tables and chairs.

Inside there are a fully equipped 50 sqm kitchen and some bathrooms for employees as well as a coffee bar area with a wood oven and one bathroom for customers.

On the back side the coffee bar overlooks a large terrace of about 400 sqm with suggestive sea view.

The property is surrounded by a large pine forest that can be furthermore used and equipped for serving food and drinks.

Torre Inserraglio is part of the nature reserve which develops around the famous inlet of Porto Selvaggio, from which it is just 4 km away; it is surrounded by the beautiful Mediterranean scrub and its Tower dating back to the 15th century belongs to the several sighting towers of Salento.

Torre Inserraglio is just 7 km from the seaside town of Santa Caterina, 20 km from Gallipoli and about 75 km from Brindisi Airport.

Gruppo Bodini

□ LECCE - Via 95 Reggimento Fanteria, 11

□ MAGLIE - Via Trento e Trieste, 22

□ GALLIPOLI - Corso Roma, 7

- Lecce (LE) - (+39) 0832 099369

lecce@cbitaly.it - <https://www.coldwellbanker.it/en>

VAT 04954530962



Certification

Energy Class: G EP_{glnr}: 84.14 kWh/□

Features

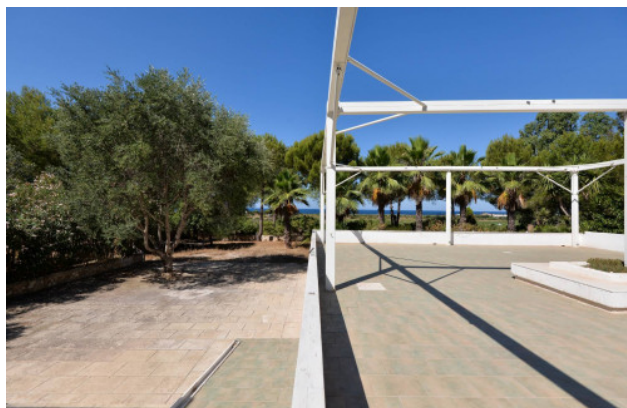
Property ID: CBI069-613-132539	Contract: Sale
Categoria: Commercial Property	Address: Strada Provinciale 286
Zip Code: 73048	Municipality: Nardò
Zona: Torre Inserraglio	Total sqm: 480 sq.m.
Bathrooms: 3	Rooms: 2
Internal condition: Good	Covered sq.m.: 200 sq.m.
Uncovered sq.m.: 800 sq.m.	

Nearby

Gyms	Beauty centres
Soccer fields	Sport centres
Tennis courts	Cycle paths
Playgrounds	Rail station
Public transports	Nursery school
Primary schools	Secondary schools
High school	Bar
Post offices	Shopping centres
Municipal office	

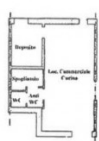
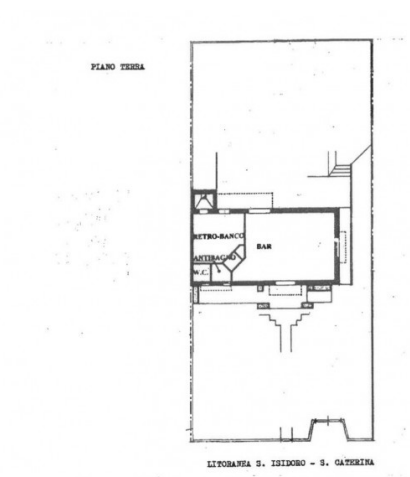


Gruppo Bodini
 □ LECCE - Via 95 Reggimento Fanteria, 11
 □ MAGLIE - Via Trento e Trieste, 22
 □ GALLIPOLI - Corso Roma, 7
 - Lecce (LE) - (+39) 0832 099369
 lecce@cbitaly.it - <https://www.coldwellbanker.it/en>
 VAT 04954530962



Gruppo Bodini

□ LECCE - Via 95 Reggimento Fanteria, 11
 □ MAGLIE - Via Trento e Trieste, 22
 □ GALLIPOLI - Corso Roma, 7
 - Lecce (LE) - (+39) 0832 099369
 lecce@cbitaly.it - <https://www.coldwellbanker.it/en>
 VAT 04954530962



Piano Terra

Gruppo Bodini

□ LECCE - Via 95 Reggimento Fanteria, 11

□ MAGLIE - Via Trento e Trieste, 22

□ GALLIPOLI - Corso Roma, 7

- Lecce (LE) - (+39) 0832 099369

lecce@chitaly.it - <https://www.coldwellbanker.it/en>

VAT 04954530962