



**COLDWELL BANKER**

BARBERA GROUP  
INTERNATIONAL REAL ESTATE

Barbera Group International Real Estate  
Via Panama, 22 - 00198 Roma (RM)  
(+39) 06 8411681

## **Penthouse for sale in Roma**

**€ 5.500.000**

**Ref. CBI100-551-290188**



**600 sq.m. | Bathrooms: 5 | Bedrooms: 5 | Rooms: 20**

### **PANORAMIC PENTHOUSE AND SUPERATTICO - MONTI PARIOLI -**

In the heart of the Monti Parioli district and precisely in Via Sebastiano Conca, a quiet street adjacent to Villa Balestra, we offer for sale a splendid penthouse and super-attic with large panoramic terraces over the whole of Rome.

The apartment, of great charm and high representation, is served by double entrances and is spread over two levels for a covered area of about 600 square meters as well as 350 square meters of terraces with a breathtaking view.

On the fifth floor, we find the first entrance, directly from the lift, which leads to the triple living room with adjoining dining room characterized by high ceilings and large and bright windows, terrace, kitchen, bedroom and bathroom.

An elegant internal staircase leads to the sixth floor where we find an airy and bright living room, 4 bedrooms with respective bathrooms.

Both floors are surrounded by terraces, and an external staircase leads to the roof of the property with an unforgettable 360-degree view over the whole of Rome.

The property is in excellent condition.

Concierge service all day, cellar and 4 covered parking spaces.

Cadastral category A2.

### **Certification**

**Barbera Group International Real Estate**

Via Panama, 22 - Roma (RM) - (+39) 06 8411681  
infobarberagroup@cbitaly.it - <https://www.coldwellbanker.it/en>  
VAT 04954530962



**Energy Class:** G

**EPglnr:** 175.00 kwh/□

## Features

Property ID: CBI100-551-290188	Contract: Sale
Categoria: Penthouse	Address: Via Sebastiano Conca, 11
Zip Code: 197	Municipality: Roma
Total sqm: 600 sq.m.	Bedrooms: 5
Bathrooms: 5	Rooms: 20
Internal condition: Excellent	Floor: Attic
Total floors: 6	Independent heating: Central Heating with Counter
Lift: Yes	Date of construction: 1970
Current Status: Available after the deed of sale	Condominium costs: € 300
Balconies: Present	Terrace: Present, 300 sq.m.
Kitchen: Regular Kitchen	Garage: for four cars
Terrace : 300 □	Antenna : Condominium
Porch	SAT Tv : Independent
High-speed internet connection	Cellar : 30 □
Fastweb connection	Air conditioning
Electric system : Compliant	Shower
Wooden fixtures	Alluminium fixtures
Panoramic view	

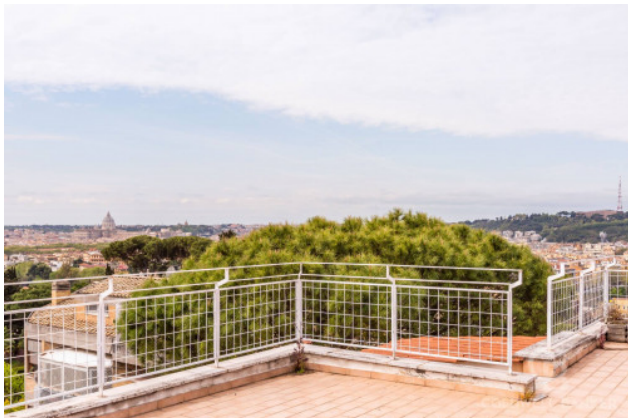
## Nearby

Gyms	Beauty centres
Soccer fields	Sport centres
Tennis courts	Cycle paths
Playgrounds	Rail station
Public transports	Nursery school
Primary schools	Secondary schools
High school	Bar
Post offices	Shopping centres
Municipal office	

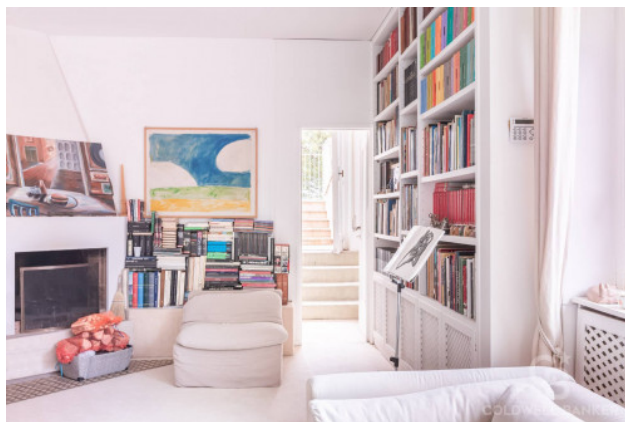




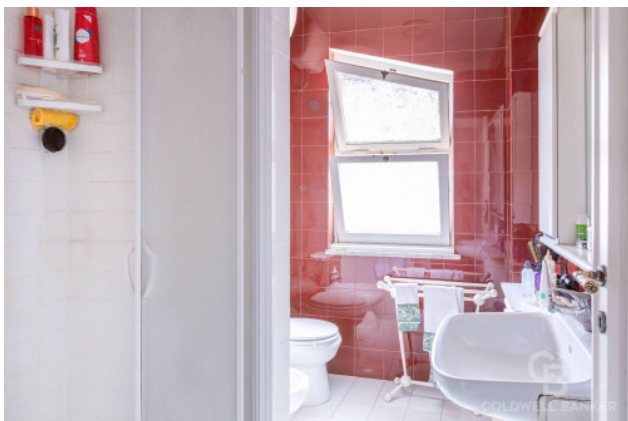




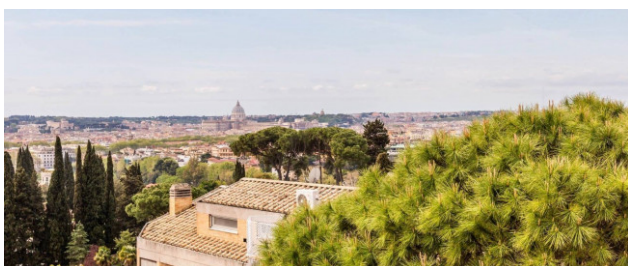










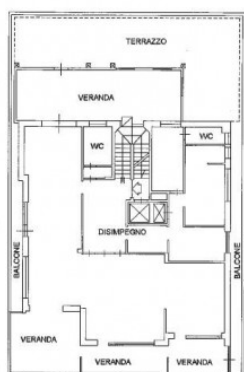


PIANO OTTAVO

LOCALE CANTINA



PIANO 1 SOTTOSTRADA h=2.50



PIANO SESTO h=3.10



PIANO SETTIMO h=2.80