



COLDWELL BANKER
GRUPPO BODINI

Gruppo Bodini

□ LECCE - Via 95 Reggimento Fanteria, 11

□ MAGLIE - Via Trento e Trieste, 22

□ GALLIPOLI - Corso Roma, 7

- 73100 Lecce (LE)

(+39) 0832 099369

Apartment for sale in Copertino

€ 62.000

Ref. CBI069-2301-132485



210 sq.m. | Bathrooms: 1 | Bedrooms: 3 | Rooms: 4

COPERTINO - LECCE - SALENTO

In Copertino, a few minutes from the city center, we offer for sale a detached house of approximately 150 sqm located on the 1st floor of a small context with only two residential units.

The apartment is to be completed and it is registered under the cadastral category "F3".

From the entrance, a staircase leads to the house consisting of entrance hall, bright sitting room, three large-size bedrooms, two of which are double bedrooms and one large single bedroom.

There are also a spacious eat-in kitchen with separate kitchenette, bathroom and laundry room.

The living room and two of the bedrooms have access to a balcony of approximately 6 sqm overlooking the street front, while the kitchen area and the third bedroom overlook a rear terrace of approximately 50 sqm.

From the stairwell it is possible to reach the private roof terrace, which extends over the entire surface of the house.

Copertino is 15 km from Lecce, 10 km from Nardò, about 20 km from the beautiful seaside locations of Santa Maria al Bagno and Santa Caterina and 65 km from Brindisi airport.

Certification

Energy Class: Not applicable

Gruppo Bodini

□ LECCE - Via 95 Reggimento Fanteria, 11

□ MAGLIE - Via Trento e Trieste, 22

□ GALLIPOLI - Corso Roma, 7

- Lecce (LE) - (+39) 0832 099369

lecce@cbitaly.it - <https://www.coldwellbanker.it/en>

VAT 04954530962

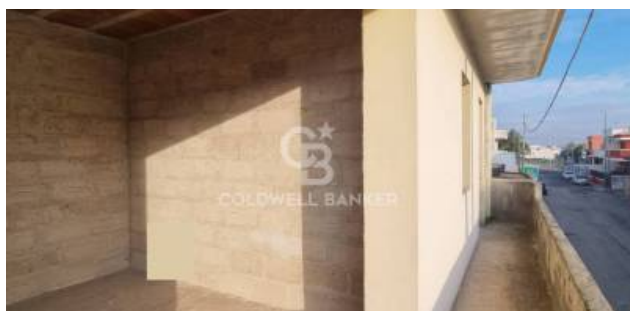
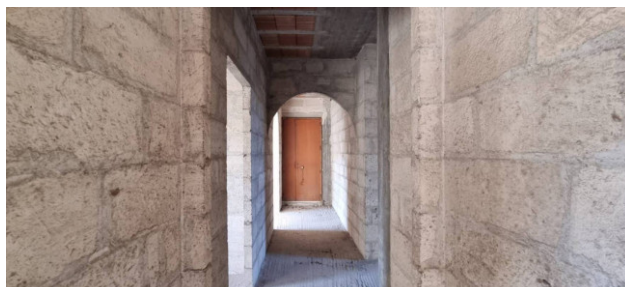


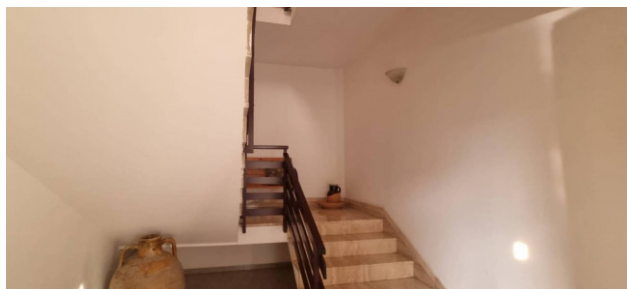
Features

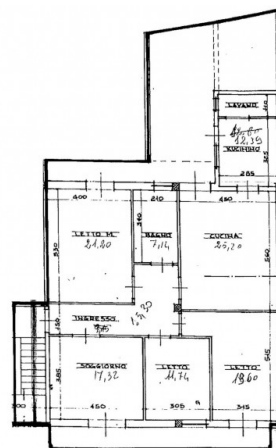
Property ID: CBI069-2301-132485	Contract: Sale
Categoria: Apartment	Address: Via Assisi
Zip Code: 73043	Municipality: Copertino
Total sqm: 210 sq.m.	Livable surface: 150.00
Bedrooms: 3	Bathrooms: 1
Rooms: 4	Internal condition: Rustic
Floor: 1	Total floors: 1
Date of construction: 1993	Current Status: Available after the deed of sale
Balconies: Present, 6 sq.m.	Sea distance: 14.000 meter
Kitchen: Regular Kitchen	Airport distance
Shops distance or nearest city	

Nearby

Gyms	Beauty centres
Soccer fields	Sport centres
Tennis courts	Cycle paths
Playgrounds	Rail station
Public transports	Nursery school
Primary schools	Secondary schools
High school	Bar
Post offices	Shopping centres
Municipal office	







Gruppo Bodini

□ LECCE - Via 95 Reggimento Fanteria, 11

□ MAGLIE - Via Trento e Trieste, 22

□ GALLIPOLI - Corso Roma, 7

- Lecce (LE) - (+39) 0832 099369

lecce@chitaly.it - <https://www.coldwellbanker.it/en>

VAT 04954530962