



Indipendent house for sale in Centola Palinuro

€ 700.000

Ref. CBI087-891-52340



300 sq.m. | Bathrooms: 3 | Bedrooms: 6 | Rooms: 9

Enchanting villa located in the suggestive locality "Piano Faracchio" of the hamlet of Palinuro in the municipality of Centola, this solution offers the unique opportunity to live in an extraordinary place. Inserted in a residential area, the property allows you to reach both the splendid beaches and the charming historic center of Palinuro on foot, offering a perfect balance between tranquility and comfort.

The property, distributed over four levels, boasts a total surface area of approximately 300 m2, and is composed as follows:

-Ground floor: kitchen, two bedrooms, bathroom and closet.

-First floor: large living room with kitchen, bedroom, bathroom and terrace;

-Second floor: kitchen, two bedrooms, one bedroom with private bathroom, bathroom and terrace;

-Third floor: Panoramic terrace, an ideal place to enjoy unforgettable sunsets or to organize evenings with friends and family.

The villa is located on the hill overlooking Palinuro, offering a wonderful panoramic view of the Baia del Buon Dormire and the famous "Scoglio del Coniglio". A breathtaking view that becomes an integral part of your daily living experience.

Furthermore, the solution is surrounded by an uncovered area of approximately 1200 m2, offering large green spaces and the convenience of private parking for four cars.

This property is ideal for those looking for an elegant and functional retreat in a unique setting. Not only does it represent a valuable housing opportunity, but also a lasting investment in a corner of paradise overlooking the sea.



Certification

Energy Class: G

Features

Property ID: CBI087-891-52340

Contract: Sale

Categoria: Independent house

Address: Pianofaracchio

Municipality: Centola

Zona: Palinuro

Total sqm: 300 sq.m.

Bedrooms: 6

Bathrooms: 3

Rooms: 9

Internal condition: Good

Floor: Multi-Storey

Total floors: 3

Parking space: Uncovered Parking

Date of construction: 1980

Balconies: Present

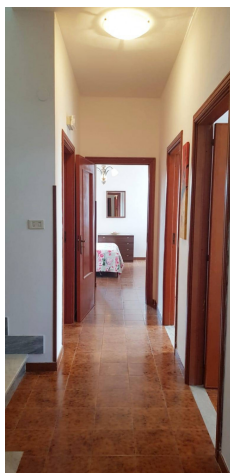
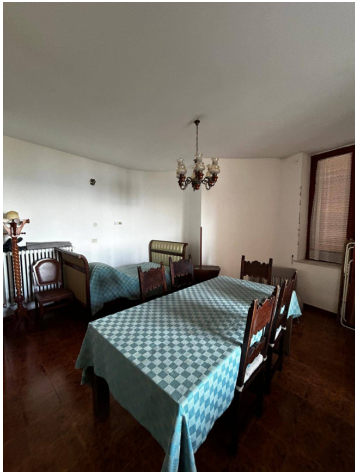
Terrace: Present

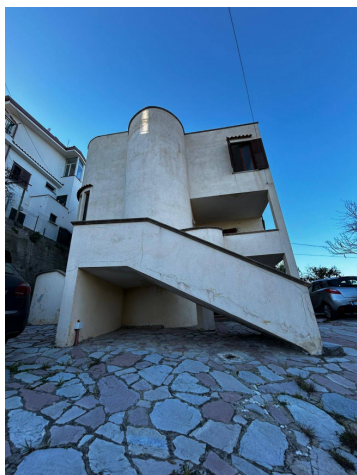
Garden: Private

Sea distance: 1.000 meter

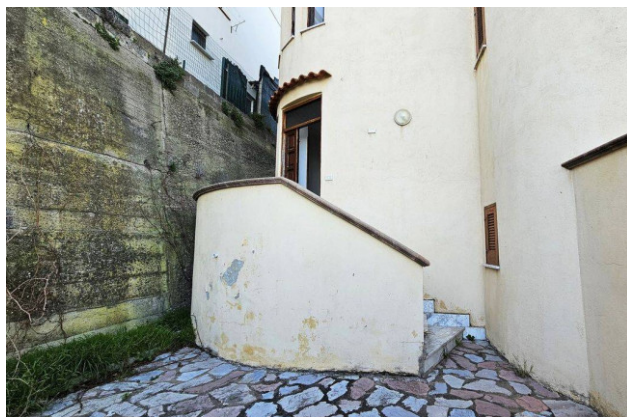
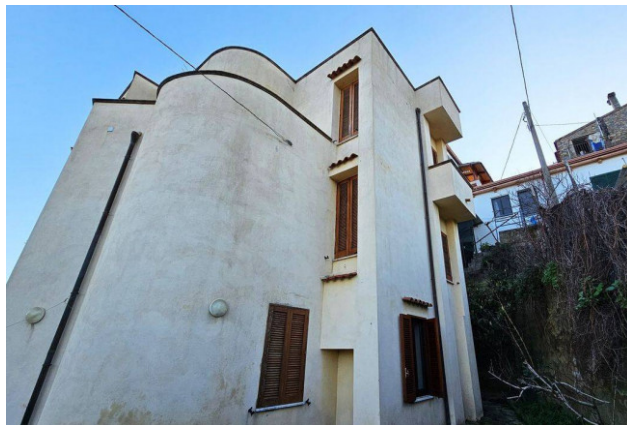
Kitchen: Kitchenette











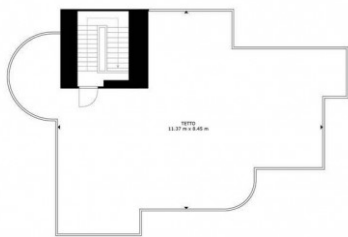
SUPERFICIE UTILE 100,00 m²
 SUPERFICIE TOTALE 100,00 m²
 PAVI: 12,00 m² - CANTO: 1,00 m²
 RIVESTIMENTO ARREDO: 12,00 m² - VERANDA: 11 m²
 1 VALORE DI UN CONTRIBUTO ARREDO: 12,00 m² - VERANDA: 11 m²

Matterport



SUPERFICIE UTILE 100,00 m²
 SUPERFICIE TOTALE 100,00 m²
 PAVI: 12,00 m² - CANTO: 1,00 m²
 RIVESTIMENTO ARREDO: 12,00 m² - VERANDA: 11 m²
 1 VALORE DI UN CONTRIBUTO ARREDO: 12,00 m² - VERANDA: 11 m²

Matterport



SUPERFICIE INTERNA LINDA
 SUPERFICIE COVERTA 40 m² - COV. 13 m²
 PIANO 1 13 m² - PIANO 2 8 m²
 ESCLUSIVO AREA 100 m² - P. 100 m² - COV. 13 m²
 TETTO 13,37 m²
 L'IMMAGINE È UN RAPPRESENTAZIONE SCHEMATICA DELLO STATO DI FATTO. IL CONTOGGIO VERIFICARE IN SITUO IL CASO

