



COLDWELL BANKER
GRUPPO BODINI

Gruppo Bodini
□ LECCE - Via 95 Reggimento Fanteria, 11
□ MAGLIE - Via Trento e Trieste, 22
□ GALLIPOLI - Corso Roma, 7
- 73100 Lecce (LE)
(+39) 0832 099369

Independent apartment for sale in Soleto

€ 85.000

Ref. CBI069-2223-132471



200 sq.m. | Bathrooms: 2 | Bedrooms: 4 | Rooms: 5

SOLETO - LECCE - SALENTO

In Soleto, a few steps from the historic center, we offer for sale a **large building** of approximately 180 sqm on the **first floor** with **private roof terrace**.

The property, currently registered under the cadastral category "F3", has an **independent entrance** from the street front where a staircase leads to the first floor consisting of entrance hall, **large living room** on the right side whose ceiling has recently been totally renovated.

On the left side of the entrance hall, there are **four rooms with star vaults**.

From the stairwell it is possible to reach the roof terrace of the property which extends over the entire surface of the building, offering a panoramic view of the entire surrounding area.

The property, to be renovated, offers **great design potential**, lending itself to a wide range of uses.

For those who need a larger size, there is the possibility of purchasing the ground floor separately, with the same surface and currently registered as "C1".

Soleto is about 22 km from the beautiful towns of the Ionian coast such as Santa Maria al Bagno and Gallipoli, 25 km from Lecce and 72 km from Brindisi Airport.

Certification

Gruppo Bodini

□ LECCE - Via 95 Reggimento Fanteria, 11
□ MAGLIE - Via Trento e Trieste, 22
□ GALLIPOLI - Corso Roma, 7
- Lecce (LE) - (+39) 0832 099369
lecce@cbitaly.it - <https://www.coldwellbanker.it/en>
VAT 04954530962



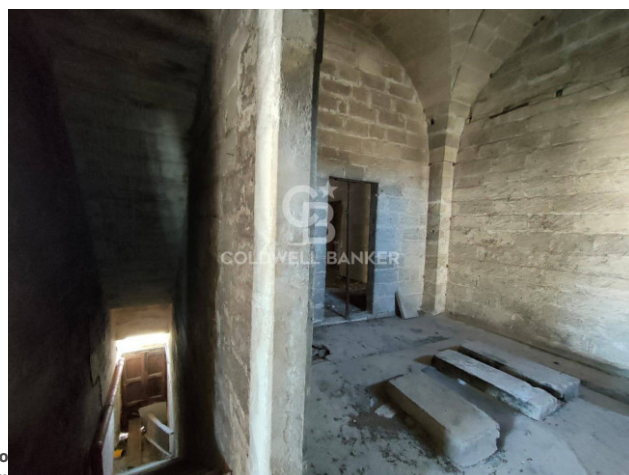
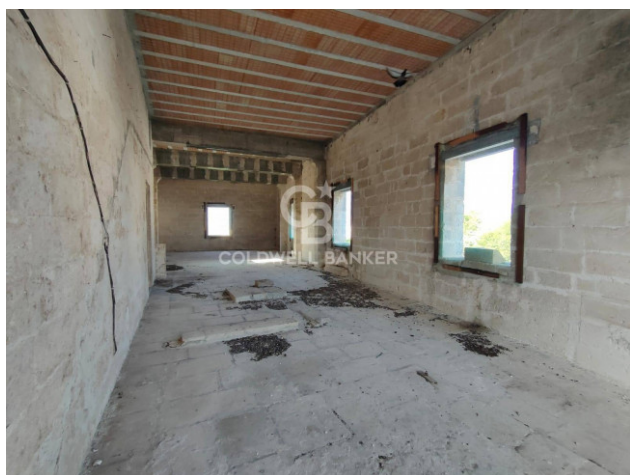
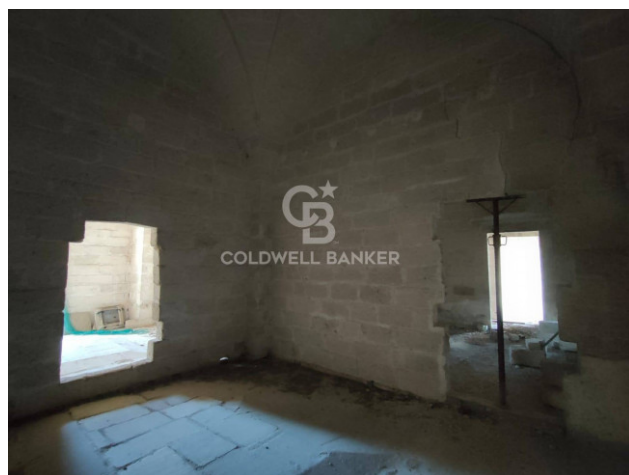
Energy Class: Not applicable

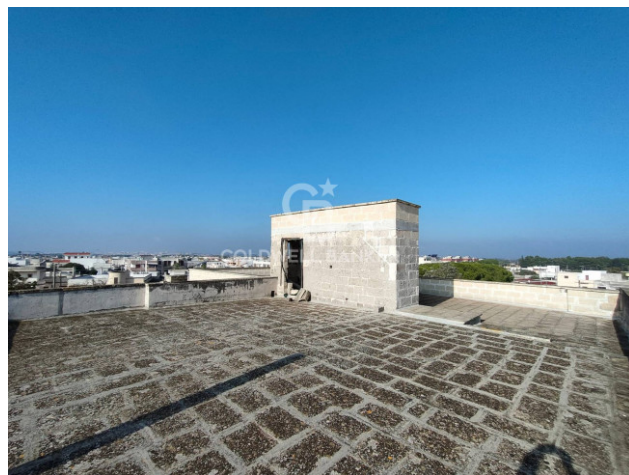
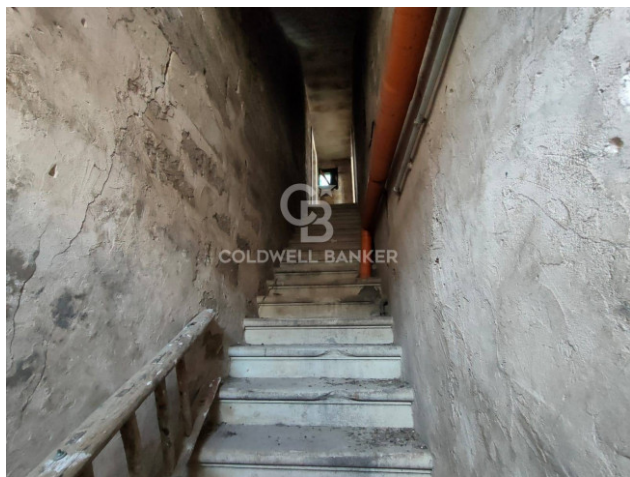
Features

Property ID: CBI069-2223-132471	Contract: Sale
Categoria: Independent apartment	Address: Via Duca degli Abruzzi
Zip Code: 73010	Municipality: Soleto
Total sqm: 200 sq.m.	Livable surface: 180.00
Bedrooms: 4	Bathrooms: 2
Rooms: 5	Internal condition: Rustic
Floor: 1	Total floors: 2
Date of construction: 2008	Current Status: Available after the deed of sale
Balconies: Present	Terrace: Present, 180 sq.m.
Sea distance: 22.000 meter	Kitchen: Regular Kitchen
Wooden fixtures	Airport distance
Shops distance or nearest city	

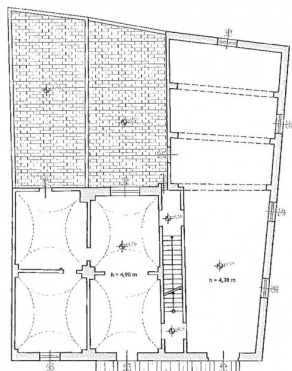
Nearby

Gyms	Beauty centres
Soccer fields	Sport centres
Tennis courts	Cycle paths
Playgrounds	Rail station
Public transports	Nursery school
Primary schools	Secondary schools
High school	Bar
Post offices	Shopping centres
Municipal office	

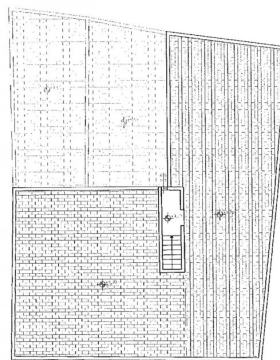




PIANTA PIANO PRIMO



PIANTA ARRE SOLARI



Gruppo Bodini

□ LECCE - Via 95 Reggimento Fanteria, 11

□ MAGLIE - Via Trento e Trieste, 22

□ GALLIPOLI - Corso Roma, 7

- Lecce (LE) - (+39) 0832 099369

lecce@chitaly.it - <https://www.coldwellbanker.it/en>

VAT 04954530962