



## Receptive for sale in Nepi Settevene € 1.200.000 Ref. CBI028-423-498



**1.470 sq.m. | Bathrooms: 27 | Rooms: 30**

The property for sale is located in Nepi, in the Settevene area and it is a compendium consisting of a hotel on three levels above ground with a total of 24 rooms each with private bathroom, with the possibility of creating a restaurant and a bar. .

The total surface area of the property is approximately 1470 square metres, divided into three levels, all surrounded by a private outdoor area of above 1,500 square metres.

The privileged position of the property makes it ideal for those wishing to start a hotel or tourism business, but also for those looking for a versatile and valuable solution for real estate investments. The area is appreciated for its scenic beauty and proximity to important cities such as Rome and Viterbo. Thanks to its large size, this accommodation could easily be adapted for other uses, such as a wellness centre, a conference center or an RSA.

It represents a unique opportunity for those who wish to invest in a property with great potential given its proximity to Rome and its high visibility.

### Features

Property ID: CBI028-423-498

Contract: Sale

Immobiliare Sintony

Via G. Matteotti 24 - Viterbo (VT) - (+39) 0761 220676  
sintony@cbitaly.it - <https://www.coldwellbanker.it/en>  
VAT 04954530962

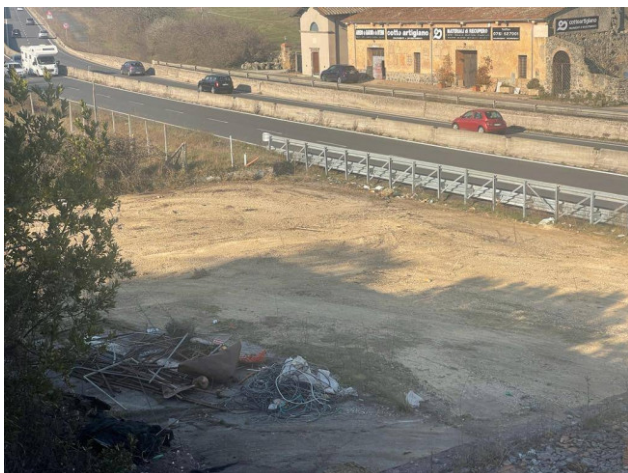
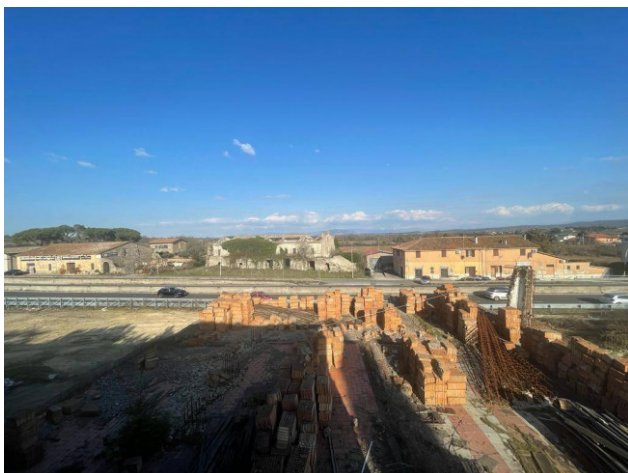
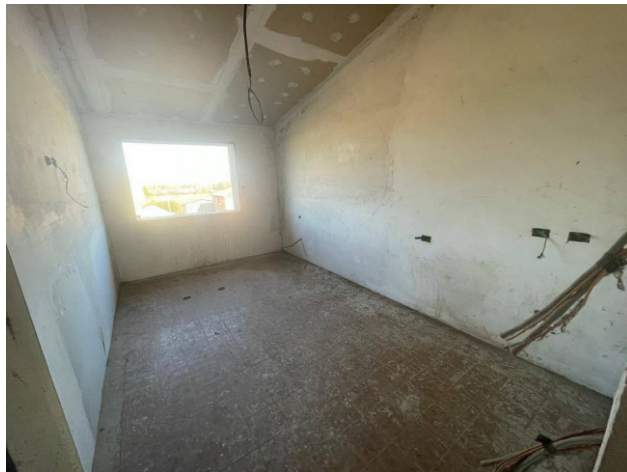


Categoria: Receptive	Address: Via Settevene Palo, snc
Zip Code: 1036	Municipality: Nepi
Zona: Settevene	Total sqm: 1.470 sq.m.
Bathrooms: 27	Rooms: 30
Internal condition: To be renovated	Covered sq.m.: 1.470 sq.m.
Uncovered sq.m.: 1.500 sq.m.	

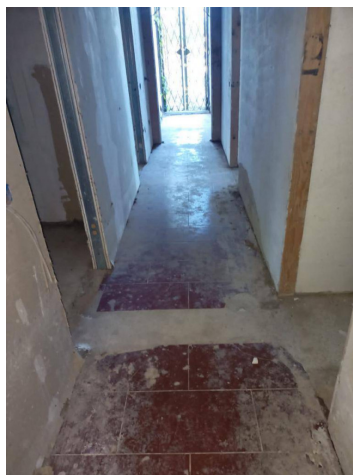




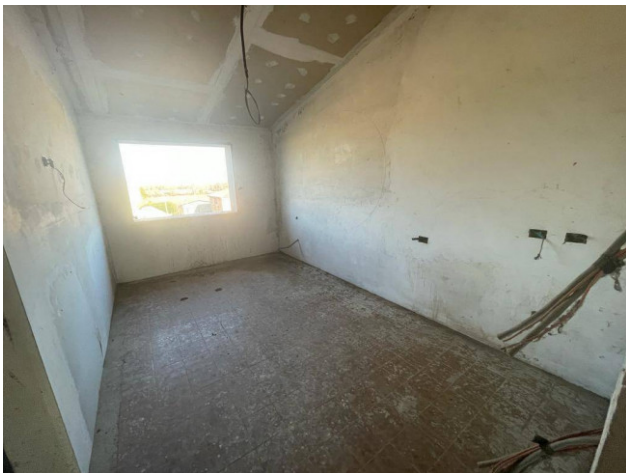








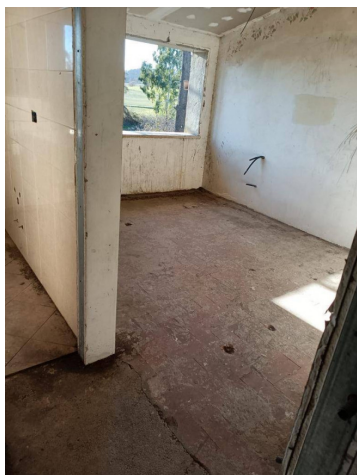




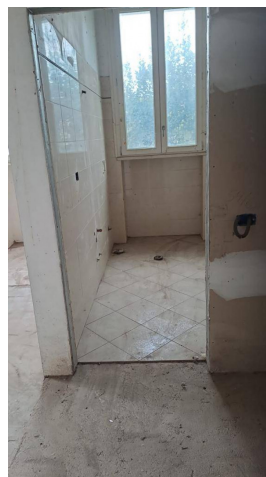












**Immobiliare Sintony**

Via G. Matteotti 24 - Viterbo (VT) - (+39) 0761 220676  
sintony@cbitaly.it - <https://www.coldwellbanker.it/en>  
VAT 04954530962