



COLDWELL BANKER  
GRUPPO BODINI

Gruppo Bodini

□ LECCE - Via 95 Reggimento Fanteria, 11

□ MAGLIE - Via Trento e Trieste, 22

□ GALLIPOLI - Corso Roma, 7

- 73100 Lecce (LE)

(+39) 0832 099369

## Rustic/Farmhouse/Court for sale in Salve

€ 35.000

Ref. CBI069-1944-132468



**4.000 sq.m. | Bathrooms: 1 | Bedrooms: 1 | Rooms: 2**

SALVE - LECCE - SALENTO

Land for sale with ancient pajara and project already approved for the construction of a small house.

In the municipality of Salve, a few km from the most famous beaches of Salento and Santa Maria di Leuca, known as the "Heel of Italy", we are pleased to offer for sale a land of approximately 4,000 sqm with a small "pajara" of ancient construction to be restored.

In addition, a project for the construction of a small house of about 40 sqm consisting of an open living/dining area, one bedroom and one bathroom was already submitted and approved on the land, with a regular building permit issued by the Municipality of Salve in 2022. The small house will be surrounded by porches and pergolas to create shaded and livable areas even outside.

The land is partly fenced by typical dry stone walls, to be rebuilt and restored into detail.

The property is well connected to the main places of tourist interest in southern Salento. It is just 4 km from the sea and the beautiful beaches of Marina di Pescoluse, better known as "The Maldives of Salento", Torre Vado and Marina di San Gregorio. It is also 10 km from Santa Maria di Leuca, 74 km from Lecce and 120 km from Brindisi Airport.

### Certification

**Energy Class:** Not applicable

Gruppo Bodini

□ LECCE - Via 95 Reggimento Fanteria, 11

□ MAGLIE - Via Trento e Trieste, 22

□ GALLIPOLI - Corso Roma, 7

- Lecce (LE) - (+39) 0832 099369

lecce@cbitaly.it - <https://www.coldwellbanker.it/en>

VAT 04954530962



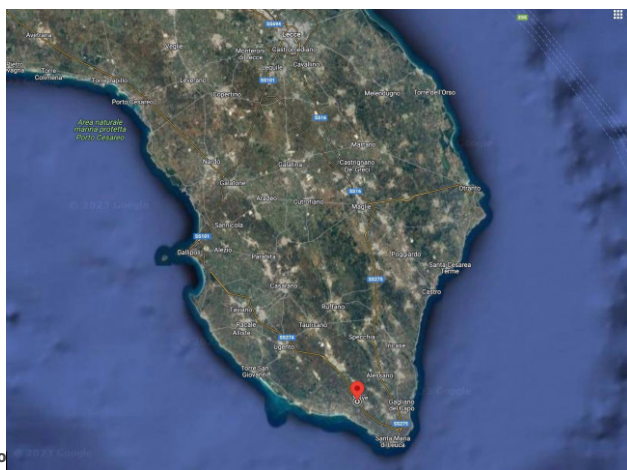
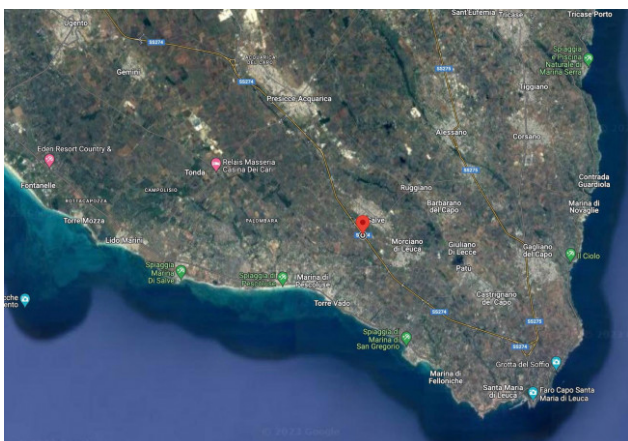
## Features

Property ID: CBI069-1944-132468	Contract: Sale
Categoria: Rustic/Farmhouse/Court	Address: Via Vicinale Madonna della Petrusa, sn
Zip Code: 73050	Municipality: Salve
Total sqm: 4.000 sq.m.	Bedrooms: 1
Bathrooms: 1	Rooms: 2
Internal condition: To be renovated	Floor: Ground Floor
Total floors: 1	Date of construction: 1900
Current Status: Available after the deed of sale	Garden: Private, 4.000 sq.m.
Sea distance: 4.000 meter	Kitchen: Exposed Kitchen
Land : 4000 □	Airport distance
Shops distance or nearest city	

## Nearby

Gyms	Beauty centres
Soccer fields	Sport centres
Tennis courts	Cycle paths
Playgrounds	Rail station
Public transports	Nursery school
Primary schools	Secondary schools
Bar	Post offices
Municipal office	



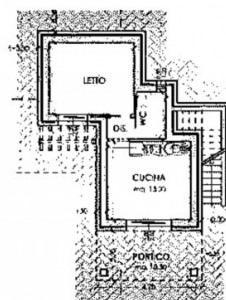


Gruppo B  
 □ LECCE - Via 95 Reggimento Fanteria, 11  
 □ MAGLIE - Via Trento e Trieste, 22  
 □ GALLIPOLI - Corso Roma, 7  
 - Lecce (LE) - (+39) 0832 099369  
 lecce@cbitaly.it - <https://www.coldwellbanker.it/en>  
 VAT 04954530962

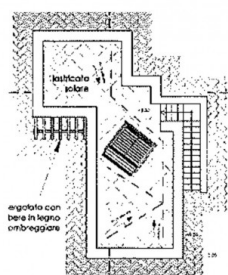








PIANO PIANO TERRA



PIANO COPERTURA