



COLDWELL BANKER  
GRUPPO BODINI

Gruppo Bodini

□ LECCE - Via 95 Reggimento Fanteria, 11

□ MAGLIE - Via Trento e Trieste, 22

□ GALLIPOLI - Corso Roma, 7

- 73100 Lecce (LE)

(+39) 0832 099369

## Apartment for sale in Scorrano

€ 120.000

Ref. CBI069-2123-132452



**101 sq.m. | Bathrooms: 2 | Bedrooms: 2 | Rooms: 3**

PUGLIA - SALENTO - SCORRANO

In Scorrano, in a residential area and a few minutes from the town center, we offer for sale a delightful apartment of approximately 95 m2, located on the first floor of a small recently built building with only six residential units, with a garage of approximately 20 m2.

At the entrance we are welcomed by a large and bright living room with kitchenette, equipped with a fireplace. There is also a large balcony which allows you to spend time outdoors, enjoying the view of the greenery of the surrounding areas and, in the distance, that of the charming historic centre. The living area is completed by a large and comfortable bathroom with shower.

The sleeping area, well disengaged, consists of a double bedroom, a single bedroom and a bathroom with bathtub.

To complete the property, a garage of approximately 20 m2.

Scorrano is 18 km from Otranto, 35 km from Lecce and 85 km from Brindisi airport.

### Certification

Energy Class: C

Gruppo Bodini

□ LECCE - Via 95 Reggimento Fanteria, 11

□ MAGLIE - Via Trento e Trieste, 22

□ GALLIPOLI - Corso Roma, 7

- Lecce (LE) - (+39) 0832 099369

lecce@cbitaly.it - <https://www.coldwellbanker.it/en>

VAT 04954530962

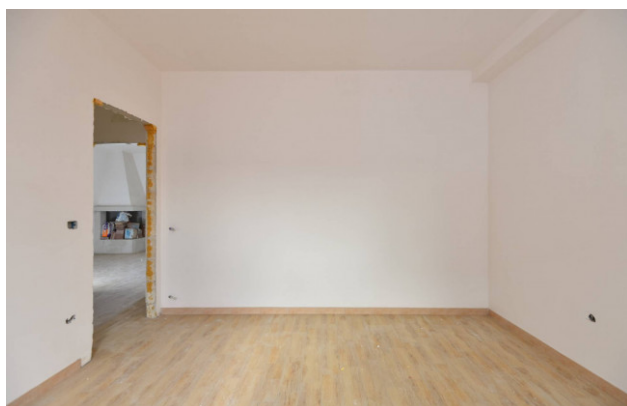


## Features

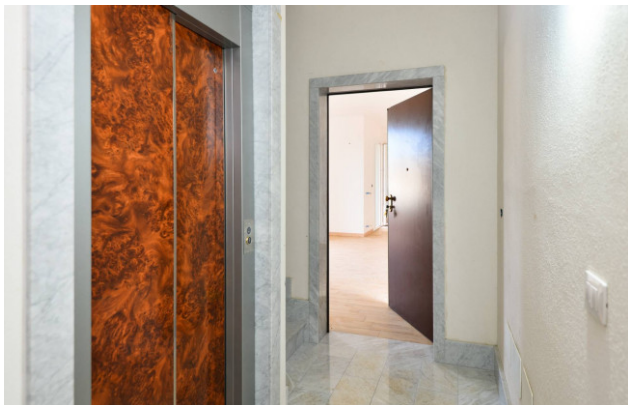
Property ID: CBI069-2123-132452	Contract: Sale
Categoria: Apartment	Address: Via Raffaello Sanzio, S.n.c.
Zip Code: 73020	Municipality: Scorrano
Total sqm: 101 sq.m.	Livable surface: 96.00
Bedrooms: 2	Bathrooms: 2
Rooms: 3	Internal condition: Excellent
Floor: 1	Total floors: 3
Independent heating: Heating	Parking space: Carport
Current Status: Available after the deed of sale	Balconies: Present, 20 sq.m.
Sea distance: 16.000 meter	Kitchen: Kitchenette
Garage: for one car, 20 sq.m.	Antenna : Condominium
Fireplace	Parquet
Electric system : Compliant	Shower
Alluminium fixtures	Shutters
Airport distance	Shops distance or nearest city
Summary description	

## Nearby

Gyms	Beauty centres
Soccer fields	Sport centres
Tennis courts	Cycle paths
Playgrounds	Rail station
Public transports	Nursery school
Primary schools	Secondary schools
High school	Bar
Post offices	Shopping centres
Municipal office	







PIANO PRIMO

**Gruppo Bodini**  
 □ LECCE - Via 95 Reggimento Fante...  
 □ MAGLIE - Via Trento e Trieste, 22  
 □ GALLIPOLI - Corso Roma, 7  
 - Lecce (LE) - (+39) 0832 099369  
 lecce@cbitaly.it - <https://www.coldwellbanker.it/en>  
 VAT 04954530962