



COLDWELL BANKER
GRUPPO BODINI

Gruppo Bodini

□ LECCE - Via 95 Reggimento Fanteria, 11

□ MAGLIE - Via Trento e Trieste, 22

□ GALLIPOLI - Corso Roma, 7

- 73100 Lecce (LE)

(+39) 0832 099369

Chalet for sale in Porto Cesareo

€ 220.000

Ref. CBI069-829-132433



190 sq.m. | Bathrooms: 1 | Bedrooms: 3 | Rooms: 4

PORTO CESAREO - LECCE - SALENTO

Just 100 meters from the crystal clear sea and the beautiful beaches of Punta Prosciutto, a renowned seaside location in the municipality of Porto Cesareo, we are pleased to offer for sale a detached villa of approximately 90 sqm arranged on one single level on the ground floor.

The property welcomes us in a large garden of about 500 sqm with a barbecue corner. The garden surrounds the house on all four sides, offering a pleasant view from all rooms of the house, thus allowing lot of light to come in.

A large veranda is the entrance to the house that consists of an open living/dining area, hallway, three bedrooms (two double bedrooms and a single one), and one bathroom.

At the back side, a laundry area and a useful storage room complete the property, which also has an external spiral staircase through which it is possible to reach the roof terrace which can also be equipped to be lived during the summer days.

The house is the ideal choice both for those who want to buy a second home by the sea and for those who want to make an investment and generate income during the summer season.

It is located a few kilometers from the other beautiful seaside resorts of the Ionian coast such as Torre Lapillo, Torre Colimena and San Pietro in Bevagna. It is also about 15 km from the center of Porto Cesareo, 35 km from Lecce, 50 km from Brindisi Airport and 160 from Bari International Airport.

Gruppo Bodini

□ LECCE - Via 95 Reggimento Fanteria, 11

□ MAGLIE - Via Trento e Trieste, 22

□ GALLIPOLI - Corso Roma, 7

- Lecce (LE) - (+39) 0832 099369

lecce@cbitaly.it - <https://www.coldwellbanker.it/en>

VAT 04954530962



Certification

Energy Class: F

EPglnr: 243.18 kwh/□

Features

Property ID: CBI069-829-132433

Contract: Sale

Categoria: Chalet

Address: Via Bartolomeo Panizza

Zip Code: 73010

Municipality: Porto Cesareo

Total sqm: 190 sq.m.

Livable surface: 90.00

Bedrooms: 3

Bathrooms: 1

Rooms: 4

Internal condition: Good

Floor: Ground Floor

Total floors: 1

Independent heating: Heating

Date of construction: 1980

Current Status: Available after the deed of sale

Garden: Private, 500 sq.m.

Sea distance: 100 meter

Kitchen: Exposed Kitchen

Antenna : Independent

Air conditioning

Electric system : Compliant with the building regulations of the time

Shower

Alluminium fixtures

Roller shutters

Airport distance

Shops distance or nearest city

Nearby

Gyms

Beauty centres

Soccer fields

Sport centres

Tennis courts

Cycle paths

Playgrounds

Rail station

Public transports

Nursery school

Primary schools

Secondary schools

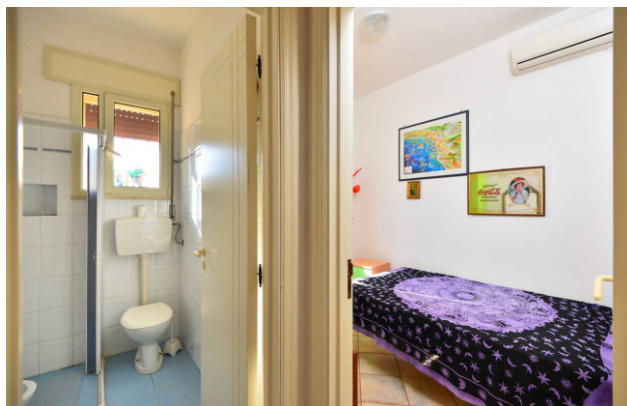
High school

Bar

Post offices

Shopping centres

Municipal office



Gruppo Bodini
 □ LECCE - Via 95 Reggimento Fanteria, 11
 □ MAGLIE - Via Trento e Trieste, 22
 □ GALLIPOLI - Corso Roma, 7
 - Lecce (LE) - (+39) 0832 099369
 lecce@cbitaly.it - <https://www.coldwellbanker.it/en>
 VAT 04954530962



Gruppo Bodini

□ LECCE - Via 95 Reggimento Fanteria, 11

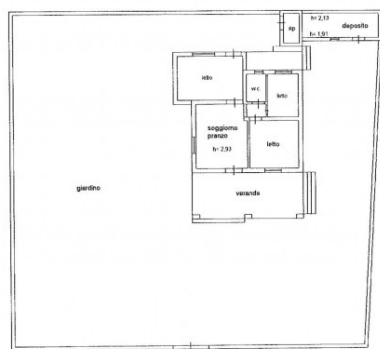
□ MAGLIE - Via Trento e Trieste, 22

□ GALLIPOLI - Corso Roma, 7

- Lecce (LE) - (+39) 0832 099369

lecce@cbitaly.it - <https://www.coldwellbanker.it/en>

VAT 04954530962



Via Beethoven Parizzo
PIANTA PIANO TERRA

Gruppo Bodini

□ LECCE - Via 95 Reggimento Fanteria, 11
 □ MAGLIE - Via Trento e Trieste, 22
 □ GALLIPOLI - Corso Roma, 7
 - Lecce (LE) - (+39) 0832 099369
 lecce@cbitaly.it - <https://www.coldwellbanker.it/en>
 VAT 04954530962