



# **Penthouse for sale in Roma**

## **Cortina d'Ampezzo**

### **€ 350.000**

#### **Ref. CBI118-1840-301593**



**55 sq.m. | Bathrooms: 1 | Bedrooms: 1 | Rooms: 2**

CORTINA D'AMPEZZO □ Via Courmayeur.

PANORAMIC AND RENOVATED PENTHOUSE FLOOR FOR SALE WITH TERRACE, PARKING SPACE AND CELLAR

For sale renovated and bright attic floor of approximately 55 m2 with panoramic terrace, perimeter balcony, covered parking space and cellar. In the tranquility of the elegant Via Courmayeur, on the attic floor of a 1970s building in a good state of maintenance with a pleasant entrance hall and level lift, the apartment is composed of: a comfortable entrance with shelving and a custom-made wooden structure that separates the sleeping area - with window and French window on the perimeter balcony, from the living area represented by a bright living room with 2nd wall shelving and large French window on the panoramic habitable terrace overlooking the Insugherata Nature Reserve, from which it is possible to enjoy spectacular sunsets; bioclimatic greenhouse with magnificent views of the roofs and pine crowns of Via Courmayeur; bathroom shower; kitchenette. Security door. Security grates. The property is completed with a covered parking space located inside the building with driveway access from Via Courmayeur and a level lift and a cellar. Independent heating (natural gas); Inverter air conditioning in the living room. Condominium expenses: approx. Euro 80.00. □ Energy class: F

## **Certification**



**Energy Class:** F

**EPglnr:** 196.86 kwh/□

## Features

Property ID: CBI118-1840-301593

Contract: Sale

Categoria: Penthouse

Address: Via Courmayeur

Zip Code: 135

Municipality: Roma

Zona: Cortina d'Ampezzo

Total sqm: 55 sq.m.

Bedrooms: 1

Bathrooms: 1

Rooms: 2

Internal condition: Restored

Floor: Attic

Total floors: 4

Independent heating: Heating

Parking space: Carport

Lift: Yes

Date of construction: 1973

Current Status: Available after the deed of sale

Condominium costs: € 80

Balconies: Present, 10 sq.m.

Terrace: Present, 15 sq.m.

Kitchen: Exposed Kitchen

Terrace : 15 □

Tv Antenna : Condominium

Tv SAT : Condominium

Closet

ADSL Coverage

Cellar : 2 □

Fastweb Coverage

Air-Conditioned

Telephone System

Wiring : By Law

Shower

Aluminum Frames

## Nearby

Gyms

Spa

Football Fields

Fitness Centers

Tennis Courts

Bike Lanes

Playgrounds

Railway Station

Public Transport

Kindergarten

Elementary Schools

Schools

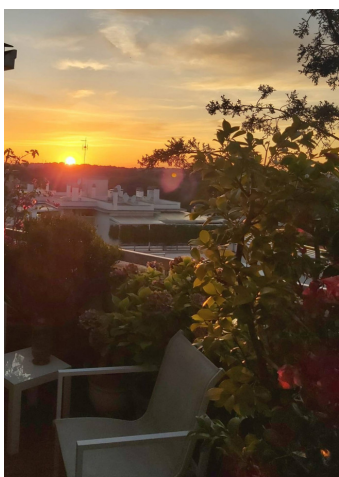
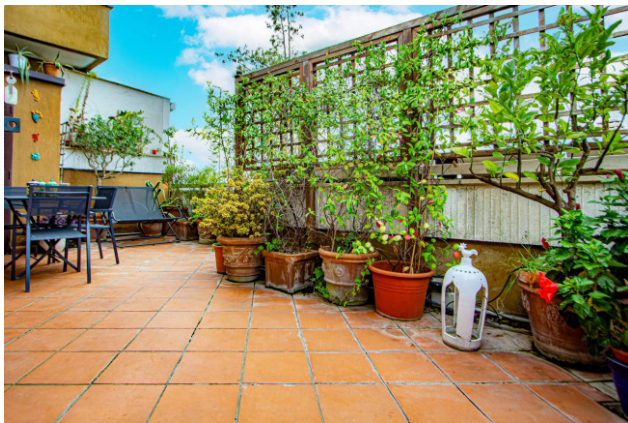
High Schools

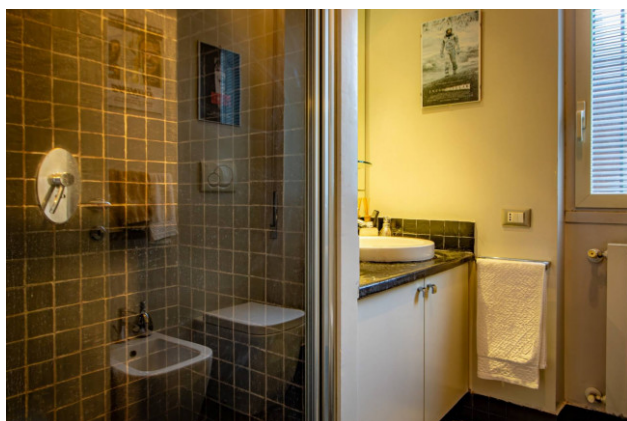
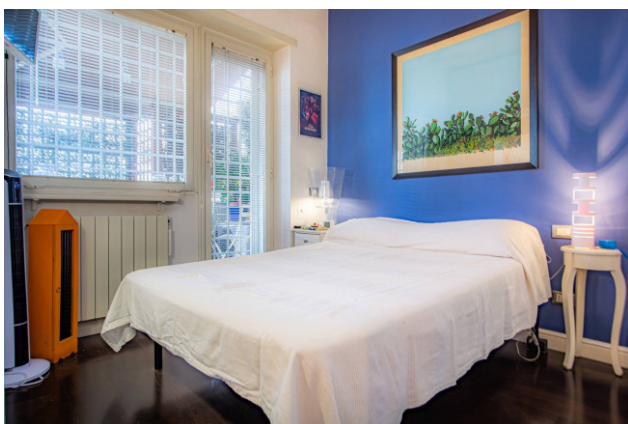
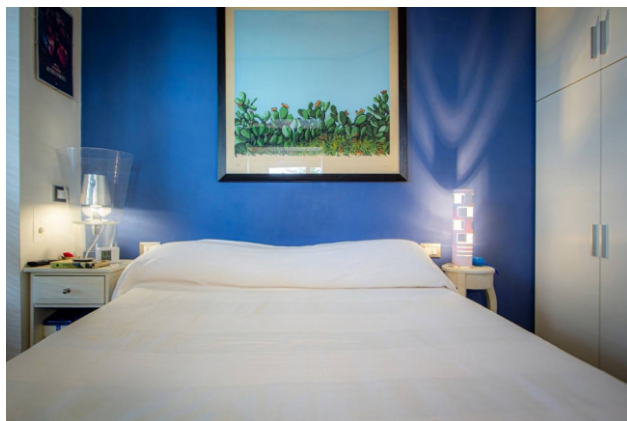
Cafe

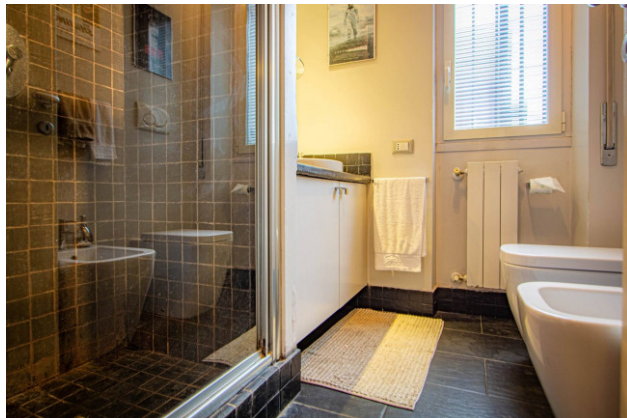
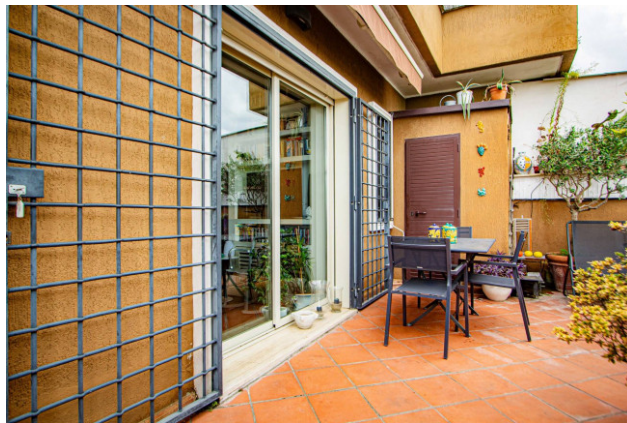
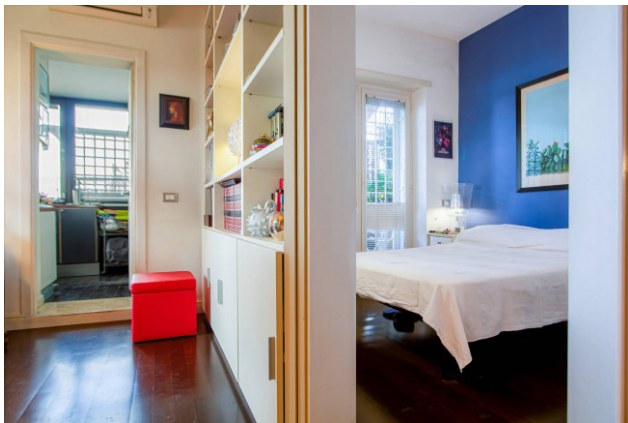
Post Offices

Shopping Centers

Municipal Offices







# STATO DI FATTO CIVILE ABITAZIONE PIANO QUARTO

H = 3,00 ml.

