



COLDWELL BANKER
GRUPPO BODINI

Gruppo Bodini

□ LECCE - Via 95 Reggimento Fanteria, 11

□ MAGLIE - Via Trento e Trieste, 22

□ GALLIPOLI - Corso Roma, 7

- 73100 Lecce (LE)

+39 0832 099369

Independent apartment for sale in Ortelle

€ 79.000

Ref. CBI069-1827-132377



150 sq.m. | Bathrooms: 2 | Bedrooms: 3 | Rooms: 5

ORTELLE - LECCE - SALENTO

We offer for sale, a few steps from the town center, an independent apartment of approx. 100 sqm arranged on two levels, in addition to garage and storage.

The property, built in the early 1980s, consists of entrance hall, kitchen with an adjoining small room that can be used either as kitchenette or pantry, a dining room and a bathroom.

On the first floor, the sleeping area consists of three double bedrooms and a further bathroom.

All rooms are very bright.

On the second floor there is a large storage room of approx. 30 sqm which communicates directly with the private roof terrace.

The property is equipped with an old heating system with cast iron radiators and is connected to all utilities. However, it requires renovation work.

The large garage, of approximately 25 sqm, located on the ground floor allows for a second independent entrance.

Ortelle is 5 km from seaside towns such as Castro and Santa Cesarea Terme, 15 km from Maglie, 43 km from Lecce and about 90 km from Brindisi Airport.

Certification

Energy Class: F

EPglnr: 163.80 kwh/□

Gruppo Bodini

□ LECCE - Via 95 Reggimento Fanteria, 11

□ MAGLIE - Via Trento e Trieste, 22

□ GALLIPOLI - Corso Roma, 7

- Lecce (LE) - (+39) 0832 099369

lecce@cbitaly.it - <https://www.coldwellbanker.it/en>

VAT 04954530962

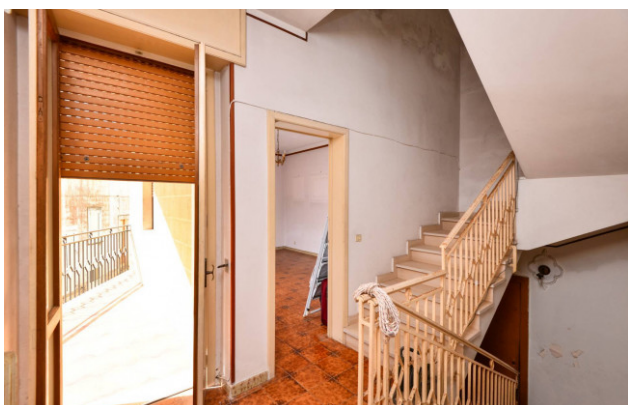


Features

| | |
|--|-------------------------------------|
| Property ID: CBI069-1827-132377 | Contract: Sale |
| Categoria: Independent apartment | Address: Via Giuseppe Giusti |
| Zip Code: 73030 | Municipality: Ortelle |
| Total sqm: 150 sq.m. | Livable surface: 100.00 |
| Bedrooms: 3 | Bathrooms: 2 |
| Rooms: 5 | Internal condition: To be renovated |
| Floor: On two-levels | Total floors: 2 |
| Independent heating: Heating | Date of construction: 1980 |
| Current Status: Available after the deed of sale | Balconies: Present |
| Sea distance: 5.000 meter | Kitchen: Regular Kitchen |
| Garage: for one car | Porch : 6 □ |
| Fireplace | Shower |
| Wooden fixtures | Alluminium fixtures |
| Roller shutters | Airport distance |
| Shops distance or nearest city | |

Nearby

| | |
|-------------------|-------------------|
| Gyms | Beauty centres |
| Soccer fields | Sport centres |
| Tennis courts | Cycle paths |
| Playgrounds | Rail station |
| Public transports | Nursery school |
| Primary schools | Secondary schools |
| High school | Bar |
| Post offices | Shopping centres |
| Municipal office | |

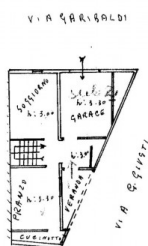


Gruppo Bodini
 □ LECCE - Via 95 Reggimento Fanteria, 11
 □ MAGLIE - Via Trento e Trieste, 22
 □ GALLIPOLI - Corso Roma, 7
 - Lecce (LE) - (+39) 0832 099369
 lecce@cbitaly.it - <https://www.coldwellbanker.it/en>
 VAT 04954530962



Gruppo Bodini
 □ LECCE - Via 95 Reggimento Fanteria, 11
 □ MAGLIE - Via Trento e Trieste, 22
 □ GALLIPOLI - Corso Roma, 7
 - Lecce (LE) - (+39) 0832 099369
 lecce@cbitaly.it - <https://www.coldwellbanker.it/en>
 VAT 04954530962

PIANO TERRA



PRIMO PIANO



H = mt. 225

