



COLDWELL BANKER
GRUPPO BODINI

Gruppo Bodini

□ LECCE - Via 95 Reggimento Fanteria, 11

□ MAGLIE - Via Trento e Trieste, 22

□ GALLIPOLI - Corso Roma, 7

- 73100 Lecce (LE)

(+39) 0832 099369

Chalet for sale in Porto Cesareo

€ 180.000

Ref. CBI069-829-132376



85 sq.m. | Bathrooms: 1 | Bedrooms: 2 | Rooms: 3

PORTO CESAREO - LECCE - SALENTO

Located inside a holiday village just 5 minutes away from the crystal clear sea of the Ionian coast, we offer for sale a detached villa of approx. 80 sm located entirely on the ground floor with an exclusive outdoor area.

The house welcomes us in a well-sized living room with sitting area and dining area with open kitchen.

A hallway leads to the sleeping area consisting of three double bedrooms, a double one a two twin ones, and one bathroom.

A large paved outdoor space of approx. 100 sqm surrounds the house on three sides and offers the possibility of spending time outside as well.

The privileged position allows you to reach the beach in just a few minutes as well as the most beautiful places on the Ionian coast such as Torre Lapillo, Punta Prosciutto, Santa Maria al Bagno and Gallipoli. This property is therefore the ideal choice both for those who wish to purchase a second home by the sea and for those who want to make an investment.

The property is also 10 km from the town of Porto Cesareo, 35 km from Lecce, 56 km from Brindisi Airport and 160 from Bari International Airport.

Certification

Energy Class: F

EPglnr: 97.10 kwh/□

Gruppo Bodini

□ LECCE - Via 95 Reggimento Fanteria, 11

□ MAGLIE - Via Trento e Trieste, 22

□ GALLIPOLI - Corso Roma, 7

- Lecce (LE) - (+39) 0832 099369

lecce@cbitaly.it - <https://www.coldwellbanker.it/en>

VAT 04954530962

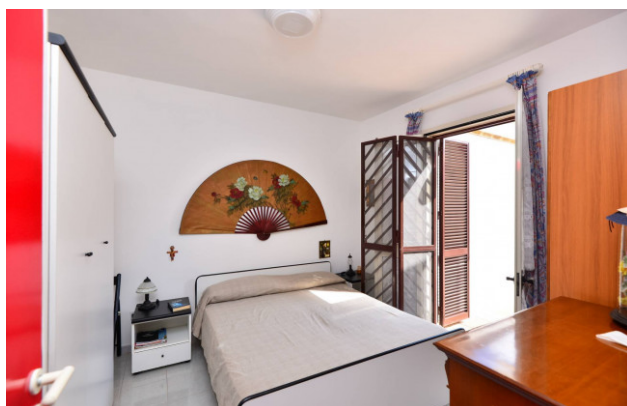


Features

Property ID: CBI069-829-132376	Contract: Sale
Categoria: Chalet	Address: Via Irlanda
Zip Code: 73010	Municipality: Porto Cesareo
Total sqm: 85 sq.m.	Livable surface: 80.00
Bedrooms: 2	Bathrooms: 1
Rooms: 3	Internal condition: Excellent
Floor: Ground Floor	Total floors: 1
Independent heating: Heating	Date of construction: 1980
Current Status: Available after the deed of sale	Garden: Private
Sea distance: 2.500 meter	Kitchen: Exposed Kitchen
Antenna : Independent	Air conditioning
Electric system : Compliant with the building regulations of the time	Aluminium fixtures
Shutters	Airport distance
Shops distance or nearest city	

Nearby

Gyms	Beauty centres
Soccer fields	Sport centres
Tennis courts	Cycle paths
Playgrounds	Rail station
Public transports	Nursery school
Primary schools	Secondary schools
High school	Bar
Post offices	Shopping centres
Municipal office	



Gruppo Bodini
 □ LECCE - Via 95 Reggimento Fanteria, 11
 □ MAGLIE - Via Trento e Trieste, 22
 □ GALLIPOLI - Corso Roma, 7
 - Lecce (LE) - (+39) 0832 099369
 lecce@cbitaly.it - <https://www.coldwellbanker.it/en>
 VAT 04954530962

