



COLDWELL BANKER  
GRUPPO BODINI

Gruppo Bodini  
□ LECCE - Via 95 Reggimento Fanteria, 11  
□ MAGLIE - Via Trento e Trieste, 22  
□ GALLIPOLI - Corso Roma, 7  
- 73100 Lecce (LE)  
(+39) 0832 099369

## Apartment for sale in Minervino di Lecce

€ 78.000

Ref. CBI069-2123-132360



**90 sq.m. | Bathrooms: 1 | Bedrooms: 2 | Rooms: 3**

PUGLIA - SALENTO - MINERVINO DI LECCE

In Minervino di Lecce, we offer for sale a nice apartment of about 84 square meters located on the first floor of a small building with only six residential units.

The property is accessed from an external landing common to another property. The living area consists of a bright living room and a comfortable eat-in kitchen.

The hallway leads to the sleeping area, consisting of a spacious double bedroom, a single bedroom and a bathroom.

The property is completed by a cellar of about 18 square meters which is accessed via an external ramp, and a balcony overlooking the back, which can be accessed from the kitchen.

Minervino is 6 km from Santa Cesarea Terme, 9 km from Castro, 10 km from Otranto. It is also 45 km from the city of Lecce and 97 km from the Salento airport.

### Certification

Energy Class: A

#### Gruppo Bodini

□ LECCE - Via 95 Reggimento Fanteria, 11  
□ MAGLIE - Via Trento e Trieste, 22  
□ GALLIPOLI - Corso Roma, 7  
- Lecce (LE) - (+39) 0832 099369  
lecce@cbitaly.it - <https://www.coldwellbanker.it/en>  
VAT 04954530962



## Features

Property ID: CBI069-2123-132360	Contract: Sale
Categoria: Apartment	Address: Via Giovanni Verga
Zip Code: 73027	Municipality: Minervino di Lecce
Total sqm: 90 sq.m.	Livable surface: 84.00
Bedrooms: 2	Bathrooms: 1
Rooms: 3	Internal condition: Excellent
Floor: 1	Independent heating: Central Heating
Parking space: Carport	Date of construction: 2010
Current Status: Available after the deed of sale	Condominium costs: € 20
Balconies: Present, 6 sq.m.	Sea distance: 7.000 meter
Kitchen: Regular Kitchen	Antenna : Condominium
High-speed internet connection	Air conditioning
Telephone system	Electric system : Compliant
Shower	Alluminium fixtures
Shutters	Airport distance
Shops distance or nearest city	Summary description

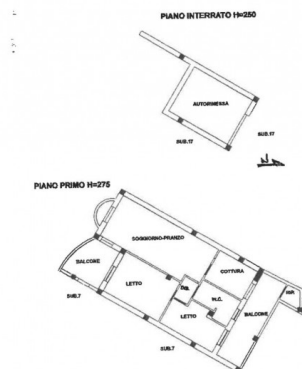
## Nearby

Gyms	Beauty centres
Soccer fields	Sport centres
Tennis courts	Cycle paths
Playgrounds	Rail station
Public transports	Nursery school
Primary schools	Secondary schools
High school	Bar
Post offices	Shopping centres
Municipal office	









**Gruppo Bodini**  
 ☎Lecce - Via 95 Reggimento Fanteria, 11  
 ☐MAGLIE - Via Trento e Trieste, 22  
 ☐GALLIPOLI - Corso Roma, 7  
 - Lecce (LE) - (+39) 0832 099369  
 lecce@cbitaly.it - <https://www.coldwellbanker.it/en>  
 VAT 04954530962