



COLDWELL BANKER

BODINI  
INTERNATIONAL REAL ESTATE

Gruppo Bodini  
Piazza Dante Alighieri, 43 - 73013 Galatina (LE)  
(+39) 0836211782

## Chalet for sale in Alliste

### € 150.000

### Ref. CBI104-2200-151



**150 sq.m. | Bathrooms: 2 | Bedrooms: 3 | Rooms: 5**

ALLISTE - SALENTO - LECCE

In a very quiet residential area, precisely in Posto Rosso, a hamlet of Alliste, in a private street and a few meters from the sea, we offer for sale a recently built villa on two levels.

The property consists of an entrance onto a large living room overlooking an external area dedicated to a laundry area with shower and space to hang out clothes, separate kitchen, hallway separating two double bedrooms and bathroom with tub.

On the first floor there is the third double bedroom with walk-in closet and bathroom with shower.

Large terrace of about 35 square meters with woodshed but actually used as a kitchen.

On the ground floor there is an external paved area of about 60 m2 with a beautiful pergola. Cured in every detail, with quality finishes. Excellent investment and ideal solution for the whole year.

Posto Rosso is located between the towns of Capilungo and Torre San Giovanni, with its low cliff overlooking the blue Ionian Sea.

The first sandy beaches are found in Marina di Mancaversa, a few minutes' drive north in the direction of the Punta Pizzo nature reserve, the Gallipoli bay and the beaches of Baia Verde; a little further away are the Marinas of Ugento.

Alliste is 56 km from Lecce and about 105 km from Brindisi Airport.

Gruppo Bodini

Piazza Dante Alighieri, 43 - Galatina (LE) - (+39) 0836211782  
galatina@cbitaly.it - <https://www.coldwellbanker.it/en>  
VAT 04954530962



## Certification

**Energy Class:** F

**EPglnr:** 342.56 kwh/□

## Features

Property ID: CBI104-2200-151

Contract: Sale

Categoria: Chalet

Address: Via Cisternella

Zip Code: 73040

Municipality: Alliste

Total sqm: 150 sq.m.

Bedrooms: 3

Bathrooms: 2

Rooms: 5

Internal condition: Good

Floor: On two-levels

Date of construction: 2015

Current Status: Available after the deed of sale

Terrace: Present, 35 sq.m.

Kitchen: Kitchenette

## Nearby

Gyms

Spa

Football Fields

Fitness Centers

Tennis Courts

Bike Lanes

Playgrounds

Railway Station

Public Transport

Kindergarten

Elementary Schools

Schools

High Schools

Cafe

Post Offices

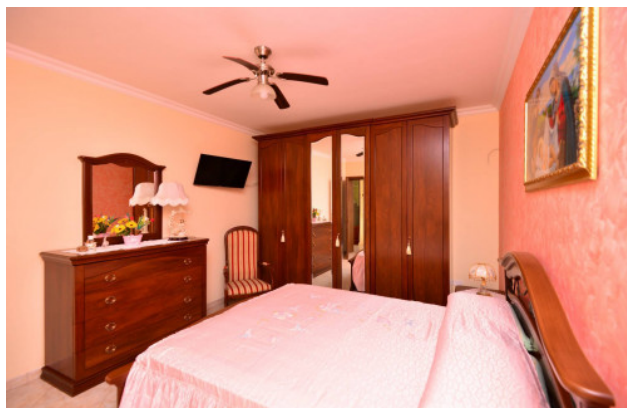
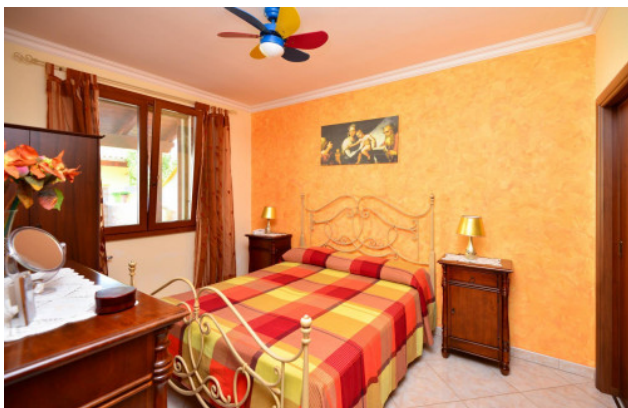
Shopping Centers

Municipal Offices

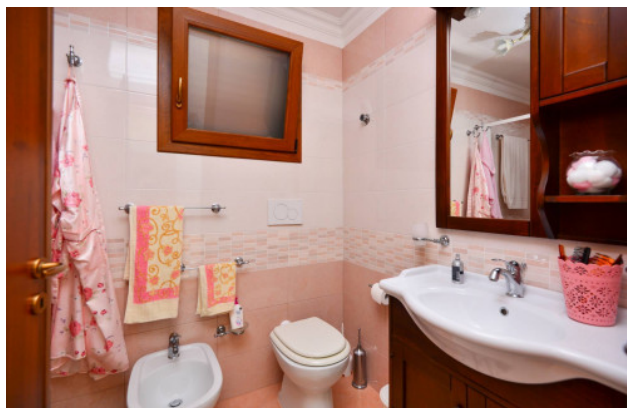






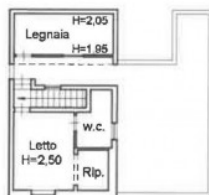








PIANO TERRA



PIANO PRIMO