



COLDWELL BANKER
GRUPPO BODINI

Gruppo Bodini

□ LECCE - Via 95 Reggimento Fanteria, 11

□ MAGLIE - Via Trento e Trieste, 22

□ GALLIPOLI - Corso Roma, 7

- 73100 Lecce (LE)

(+39) 0832 099369

Indipendent house for sale in Alessano

€ 90.000

Ref. CBI069-2123-132293



120 sq.m. | Bathrooms: 1 | Bedrooms: 2 | Rooms: 4

PUGLIA - SALENTO - ALESSANO

In Alessano, close to the town center, just fifteen minutes from the Adriatic coast and Santa Maria di Leuca, we are pleased to offer for sale a typical independent Salento house of about 90 square meters with a rear garden of about 150 square meters and a cellar of 80 square meters.

The property consists of a small open space in front of exclusive relevance which offers access to the house; at the entrance, a corridor disengages the rooms.

The property consists of four star-vaulted rooms, with high ceilings, including a living room and kitchen with fireplace, two bedrooms and a bathroom.

The corridor leads to the rear garden of about 150 square meters planted with fruit trees.

In the basement, the property is completed by a cellar of about 80 square meters, with independent access from the garden, characterized by beautiful barrel vaults.

The property needs some renovations that can bring back to life the charm of the ancient Salento houses.

Alessano is only 13 km from Santa Maria di Leuca, 38 km from Gallipoli, 44 km from Otranto, 57 km from Lecce, 108 km from Brindisi airport and 228 km from Bari airport.

Certification

Gruppo Bodini

□ LECCE - Via 95 Reggimento Fanteria, 11

□ MAGLIE - Via Trento e Trieste, 22

□ GALLIPOLI - Corso Roma, 7

- Lecce (LE) - (+39) 0832 099369

lecce@cbitaly.it - <https://www.coldwellbanker.it/en>

VAT 04954530962



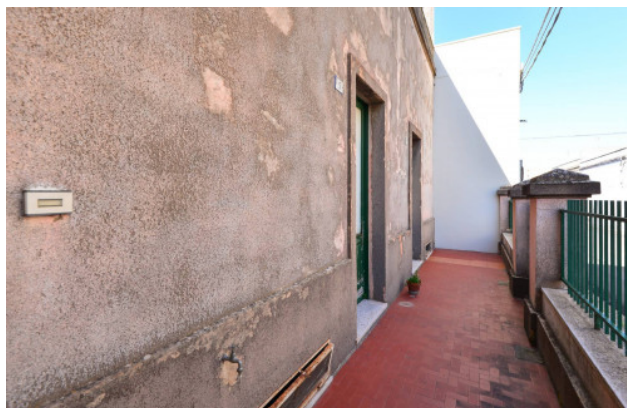
Energy Class: G

Features

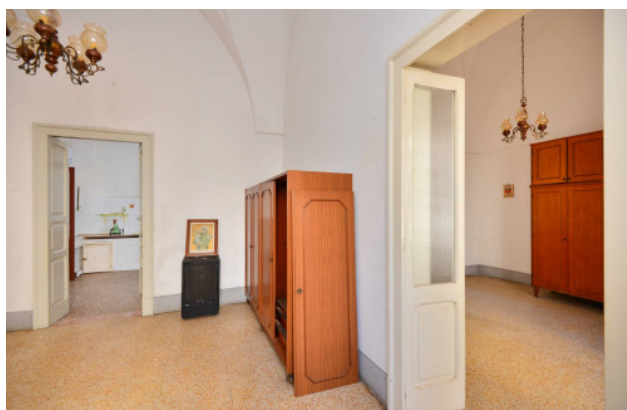
Property ID: CBI069-2123-132293	Contract: Sale
Categoria: Independent house	Address: Via Venezia
Zip Code: 73031	Municipality: Alessano
Total sqm: 120 sq.m.	Livable surface: 115.00
Bedrooms: 2	Bathrooms: 1
Rooms: 4	Internal condition: To be renovated
Floor: Ground Floor	Total floors: 1
Date of construction: 1958	Current Status: Available after the deed of sale
Terrace: Present	Garden: Private, 150 sq.m.
Sea distance: 4.000 meter	Kitchen: Regular Kitchen
: Yes	Terrace
Cellar : 50 □	Fireplace
Wooden fixtures	Airport distance
Shops distance or nearest city	Summary description

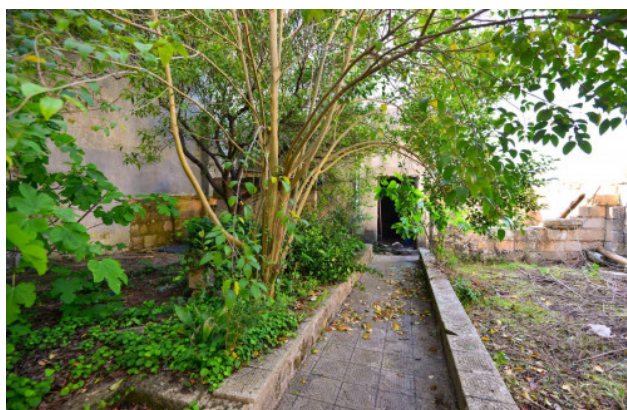
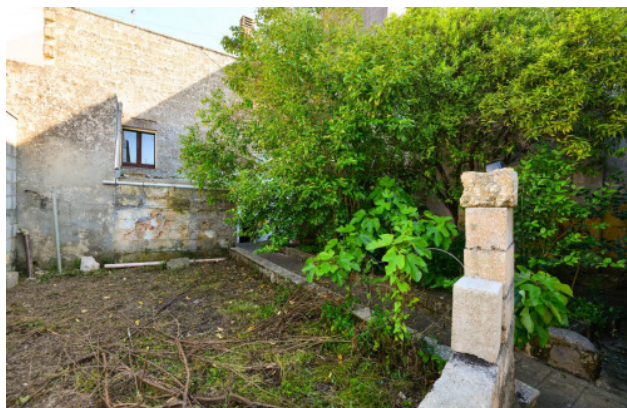
Nearby

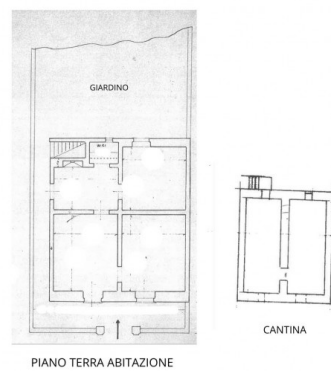
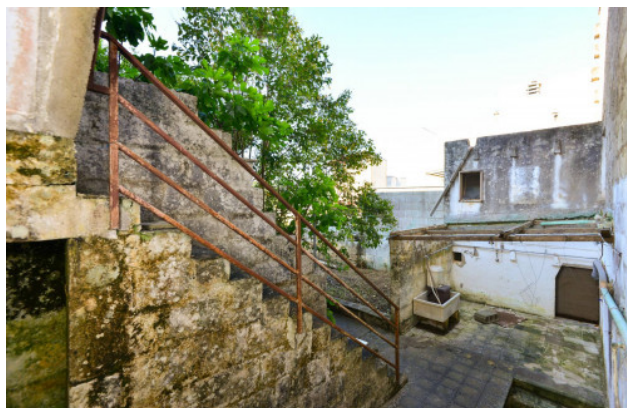
Gyms	Beauty centres
Soccer fields	Sport centres
Tennis courts	Cycle paths
Playgrounds	Rail station
Public transports	Nursery school
Primary schools	Secondary schools
High school	Bar
Post offices	Shopping centres
Municipal office	



Gruppo Bodini
 □ LECCE - Via 95 Reggimento Fanteria, 11
 □ MAGLIE - Via Trento e Trieste, 22
 □ GALLIPOLI - Corso Roma, 7
 - Lecce (LE) - (+39) 0832 099369
 lecce@cbitaly.it - <https://www.coldwellbanker.it/en>
 VAT 04954530962







Gruppo Bodini
 □ LECCE - Via 95 Reggimento Fanteria, 11
 □ MAGLIE - Via Trento e Trieste, 22
 □ GALLIPOLI - Corso Roma, 7
 - Lecce (LE) - (+39) 0832 099369
 lecce@cbitaly.it - <https://www.coldwellbanker.it/en>
 VAT 04954530962