



COLDWELL BANKER

GRUPPO BODINI

Gruppo Bodini

□ LECCE - Via 95 Reggimento Fanteria, 11

□ MAGLIE - Via Trento e Trieste, 22

□ GALLIPOLI - Corso Roma, 7

- 73100 Lecce (LE)

(+39) 0832 099369

Villa for sale in Corsano

€ 750.000

Ref. CBI069-1827-132232



206 sq.m. | Bathrooms: 3 | Bedrooms: 4 | Rooms: 6

CORSANO - LECCE - SALENTO

In Corsano, a few steps from Serre Salentine and the Regional Natural Park of Otranto-Santa Maria di Leuca, we are glad to offer for sale a villa in front of the sea of about 164 sqm spread on two autonomous and detached levels that has a garden of about 391 sqm in addition to open areas, with various patios, that are characterized by the colours of the Mediterranean maquis, a typical Mediterranean style and beautiful dry-stone walls.

On the ground floor there is a tree-lined avenue that leads to the garden in front of the villa and acts as an access to the two annex with sea view and independent entries, consisting by a double bedroom with bathroom the first one and living room with kitchen and twin room with bathroom the second one, for a total area of about 53 sqm, currently registered at the cadastre as storage.

On the same level, on the right side of the garden, there is a wooden porch of about 35 sqm, perfect place for lunches/dinners outside. Using two external staircases you reach the main block of the villa, on the first floor, of about 111 sqm.

Inside the villa is composed by a large area with living room and kitchen, a double bedroom, a twin room and a bathroom.

There is also a big terrace with a wonderful sea view of about 80 sqm, partly covered by a wooden porch on the front, and a large porch of about 100 sqm on the back overlooking the large garden.

The villa has inside two large built-in wardrobes and air conditioning system.

In addition there is the roof top that at the moment is not reachable but there is the chance to link it from outside.

Corsano is far just 2 km from Novaglie, 14 km from Santa Maria di Leuca, 17 km from Castro, 8 km from Tricase Porto, 4 km from Marina Serra, 112 km from Brindisi Airport, 217 km from Bari Airport.

Gruppo Bodini

□ LECCE - Via 95 Reggimento Fanteria, 11

□ MAGLIE - Via Trento e Trieste, 22

□ GALLIPOLI - Corso Roma, 7

- Lecce (LE) - (+39) 0832 099369

lecce@cbitaly.it - <https://www.coldwellbanker.it/en>

VAT 04954530962



Certification

Energy Class: F

EPglnr: 159.13 kwh/□

Features

Property ID: CBI069-1827-132232

Contract: Sale

Categoria: Villa

Address: Via Litoranea km 39, sn

Zip Code: 73033

Municipality: Corsano

Total sqm: 206 sq.m.

Livable surface: 164.00

Bedrooms: 4

Bathrooms: 3

Rooms: 6

Internal condition: Excellent

Floor: On two-levels

Total floors: 2

Date of construction: 1986

Current Status: Available after the deed of sale

Terrace: Present, 80 sq.m.

Garden: Private, 391 sq.m.

Sea distance: 10 meter

Kitchen: Regular Kitchen

Antenna : Independent

Air conditioning

Electric system : Compliant

Shower

Wooden fixtures

Shutters

Sea view

Panoramic view

Airport distance

Shops distance or nearest city

Nearby

Gyms

Beauty centres

Soccer fields

Sport centres

Tennis courts

Cycle paths

Playgrounds

Rail station

Public transports

Nursery school

Primary schools

Secondary schools

High school

Bar

Post offices

Shopping centres

Municipal office



Gruppo Bodini

□ LECCE - Via 95 Reggimento Fanteria, 11

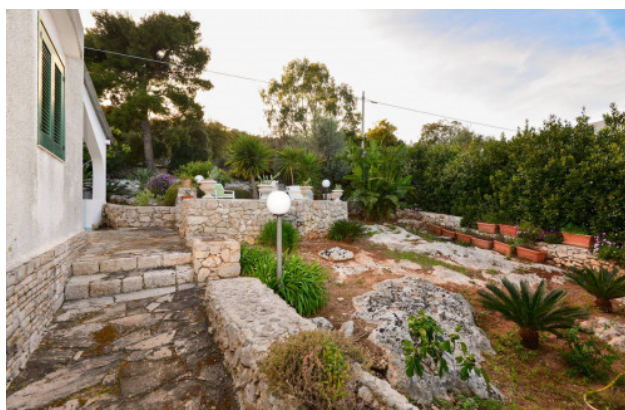
□ MAGLIE - Via Trento e Trieste, 22

□ GALLIPOLI - Corso Roma, 7

- Lecce (LE) - (+39) 0832 099369

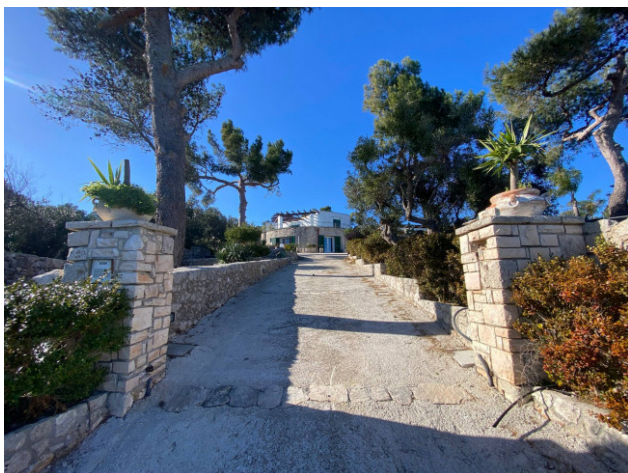
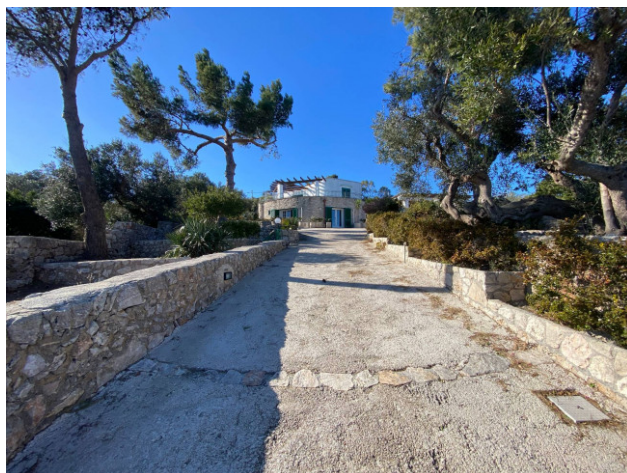
lecce@cbitaly.it - <https://www.coldwellbanker.it/en>

VAT 04954530962

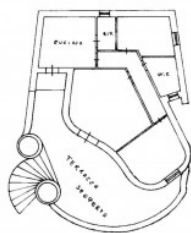


Gruppo Bodini
 □ LECCE - Via 95 Reggimento Fanteria, 11
 □ MAGLIE - Via Trento e Trieste, 22
 □ GALLIPOLI - Corso Roma, 7
 - Lecce (LE) - (+39) 0832 099369
 lecce@cbitaly.it - <https://www.coldwellbanker.it/en>
 VAT 04954530962

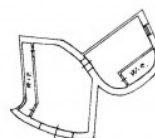








Pianta Piano Rilevato



Pianta Piano Demontato