



COLDWELL BANKER
GRUPPO BODINI

Gruppo Bodini

□ LECCE - Via 95 Reggimento Fanteria, 11

□ MAGLIE - Via Trento e Trieste, 22

□ GALLIPOLI - Corso Roma, 7

- 73100 Lecce (LE)

(+39) 0832 099369

Bed & Breakfast for sale in Lecce

Centro storico

€ 2.690.000

Ref. CBI069-553-132198



800 sq.m. | Bathrooms: 14 | Rooms: 14

LECCE

In the heart of the Baroque city, among the ancient alleys of the historic center, Coldwell Banker Lecce is delighted to offer for sale of the prestigious "B&B Piazzetta Greca", surrounded by the light of Lecce stone and its warm and soft colors.

This luxury property has a total area of about 620 sqm and it consists of two types of accommodation facilities: suites and apartments located near the main tourist and cultural attractions of the city of Lecce such as Piazzetta Greca, Piazza Sant'Oronzo, the Basilica di Santa Croce and the Roman Amphitheater.

All the rooms are finely furnished and completely immersed in the atmosphere of the warm Lecce stone, which is a glue between past and present and an evocative background for both classic and modern furnishing and decorative elements.

The property features 7 suites that can accommodate from two to five people, in addition to 4 studio apartments for two people and a larger one for 6 people.

Splendid terraces offer an enchanting view over the roofs of the historic center and they are the ideal place to have lunch or dinner while enjoying a unique atmosphere.

The property also lends itself well to being turned into a private residence.

Lecce, capital of the Baroque style is 40 km from Brindisi airport, 150 km from Bari airport, 15 km from the Adriatic coast and 18 km from the beaches of the Ionian Sea.

Gruppo Bodini

□ LECCE - Via 95 Reggimento Fanteria, 11

□ MAGLIE - Via Trento e Trieste, 22

□ GALLIPOLI - Corso Roma, 7

- Lecce (LE) - (+39) 0832 099369

lecce@cbitaly.it - <https://www.coldwellbanker.it/en>

VAT 04954530962



Certification

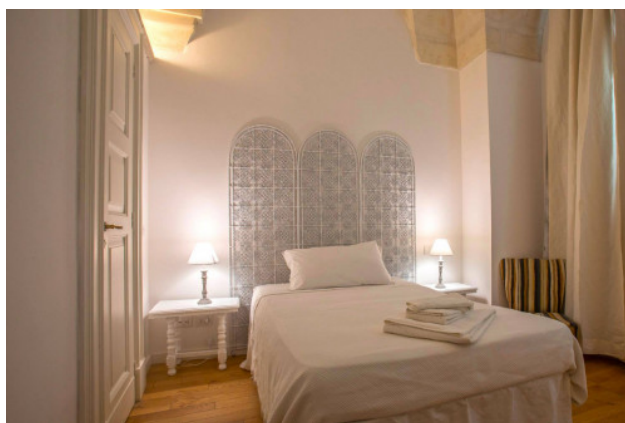
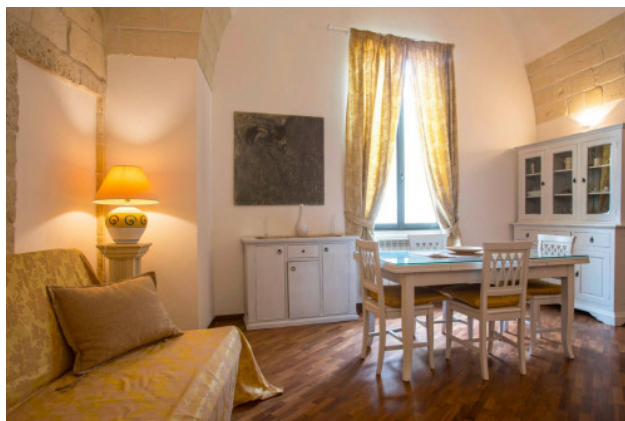
Energy Class: D EP_{glnr}: 140.00 kwh/□

Features

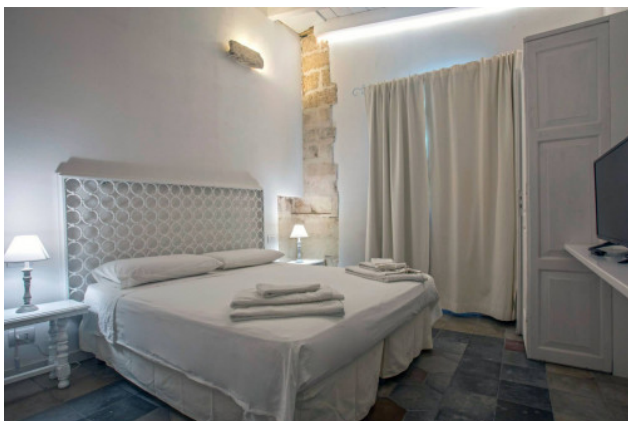
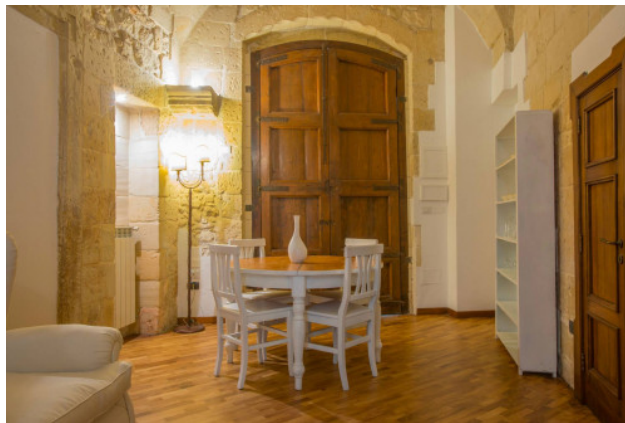
Property ID: CBI069-553-132198	Contract: Sale
Categoria: Bed & Breakfast	Address: Piazzetta Chiesa Greca
Zip Code: 73100	Municipality: Lecce
Zona: Centro storico	Total sqm: 800 sq.m.
Livable surface: 620.00	Bathrooms: 14
Rooms: 14	Internal condition: Restored
Independent heating: Heating	

Nearby

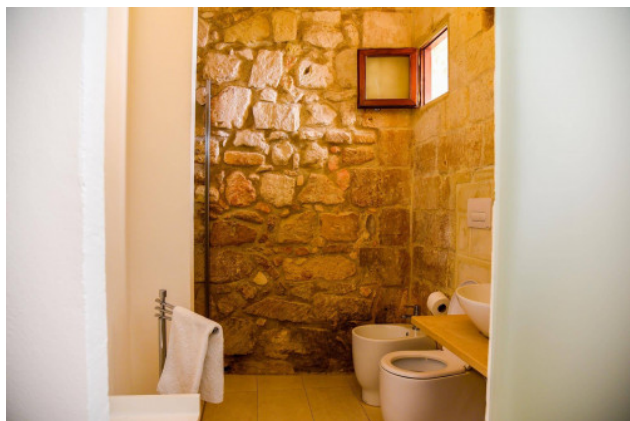
Gyms	Beauty centres
Soccer fields	Sport centres
Tennis courts	Cycle paths
Playgrounds	Rail station
Public transports	Nursery school
Primary schools	Secondary schools
High school	Bar
Post offices	Shopping centres
Municipal office	



Gruppo Bodini
 □ LECCE - Via 95 Reggimento Fanteria, 11
 □ MAGLIE - Via Trento e Trieste, 22
 □ GALLIPOLI - Corso Roma, 7
 - Lecce (LE) - (+39) 0832 099369
 lecce@cbitaly.it - <https://www.coldwellbanker.it/en>
 VAT 04954530962



Gruppo Bodini
 □ LECCE - Via 95 Reggimento Fanteria, 11
 □ MAGLIE - Via Trento e Trieste, 22
 □ GALLIPOLI - Corso Roma, 7
 - Lecce (LE) - (+39) 0832 099369
 lecce@cbitaly.it - <https://www.coldwellbanker.it/en>
 VAT 04954530962



Gruppo Bodini
 [LECCE] - Via 55 Reggimento Fanteria, 11
 [MAGLIE] - Via Trento e Trieste, 22
 [GALLIPOLI] - Corso Roma, 7
 - Lecce (LE) - (+39) 0832 099369
 lecce@cbitaly.it - <https://www.coldwellbanker.it/en>
 VAT 04954530962



Gruppo Bodini

□ LECCE - Via 95 Reggimento Fanteria, 11

□ MAGLIE - Via Trento e Trieste, 22

□ GALLIPOLI - Corso Roma, 7

- Lecce (LE) - (+39) 0832 099369

lecce@chitaly.it - <https://www.coldwellbanker.it/en>

VAT 04954530962