



COLDWELL BANKER
GRUPPO BODINI

Gruppo Bodini

□ LECCE - Via 95 Reggimento Fanteria, 11

□ MAGLIE - Via Trento e Trieste, 22

□ GALLIPOLI - Corso Roma, 7

- 73100 Lecce (LE)

(+39) 0832 099369

Chalet for sale in Lecce

Litorale

€ 215.000

Ref. CBI069-1441-132173



220 sq.m. | Bathrooms: 3 | Bedrooms: 4 | Rooms: 5

LECCE - CAMPOVERDE - SALENTO

A few minutes from Lecce and just 350 meters from the sea, we are pleased to offer for sale a lovely detached house of about 215 sq.m located in the Tourist Residence "Campoverde", on two levels and surrounded by a large private garden.

On the ground floor, the property consists of entrance hall, large and bright living room with dining area and fireplace that it is visually connected with the large front veranda, thus creating continuity between the interiors and the outside area. Adjacent to the living room, there is a large kitchenette with a small outdoor space behind it, which is used as laundry area, and one bathroom.

On the first floor there is the sleeping area with four bedrooms (two double bedrooms and two twince ones) and two bathrooms, one of them en suite.

One of the bedrooms overlooks a terrace of about 50 sq.m which offers a pleasant view of the garden and the surrounding pine forest.

The garden surrounding the house is approximately 210 sq.m and gives the possibility, together with the spacious verandas, to spend pleasant moments of relaxation in the open air and to enjoy the fresh air in the evening.

The Tourist Residence Campoverde is equipped with large swimming pools, a sport centre, restaurants and many services and has access to a private beach club which is reserved to its guests and it is reachable both on foot and by a shuttle service.

The property is also just 12 km from Lecce, 45 km from Gallipoli and 56 km from Brindisi Airport.

Gruppo Bodini

□ LECCE - Via 95 Reggimento Fanteria, 11

□ MAGLIE - Via Trento e Trieste, 22

□ GALLIPOLI - Corso Roma, 7

- Lecce (LE) - (+39) 0832 099369

lecce@cbitaly.it - <https://www.coldwellbanker.it/en>

VAT 04954530962



Certification

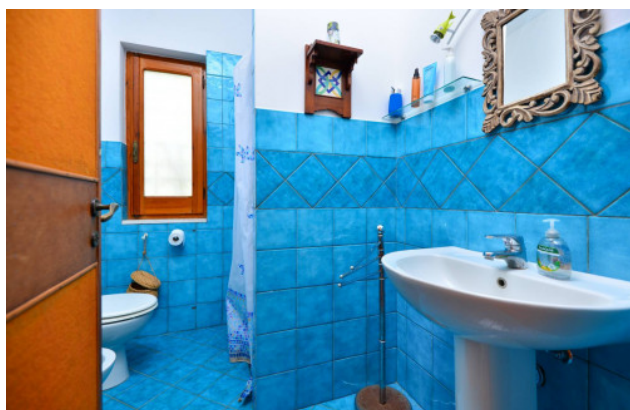
Energy Class: F EP_{glnr}: 125.49 kwh/□

Features

Property ID: CBI069-1441-132173	Contract: Sale
Categoria: Chalet	Address: Strada Provinciale San Cataldo-San Foca
Zip Code: 73100	Municipality: Lecce
Zona: Litorale	Total sqm: 220 sq.m.
Livable surface: 215.00	Bedrooms: 4
Bathrooms: 3	Rooms: 5
Internal condition: Good	Floor: On two-levels
Total floors: 2	Date of construction: 1978
Current Status: Available after the deed of sale	Terrace: Present, 50 sq.m.
Garden: Private, 210 sq.m.	Sea distance: 350 meter
Kitchen: Kitchenette	Terrace : 50 □
Antenna : Independent	Storage
Fireplace	Electric system : Compliant
Shower	Wooden fixtures
Shutters	Pool
Airport distance	Shops distance or nearest city

Nearby

Gyms	Beauty centres
Soccer fields	Sport centres
Tennis courts	Cycle paths
Playgrounds	Public transports
Bar	Shopping centres



Gruppo Bodini
 □ LECCE - Via 95 Reggimento Fanteria, 11
 □ MAGLIE - Via Trento e Trieste, 22
 □ GALLIPOLI - Corso Roma, 7
 - Lecce (LE) - (+39) 0832 099369
 lecce@cbitaly.it - <https://www.coldwellbanker.it/en>
 VAT 04954530962



Gruppo Bodini

□ LECCE - Via 95 Reggimento Fanteria, 11

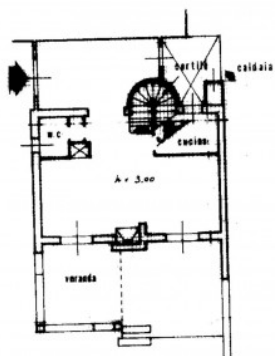
□ MAGLIE - Via Trento e Trieste, 22

□ GALLIPOLI - Corso Roma, 7

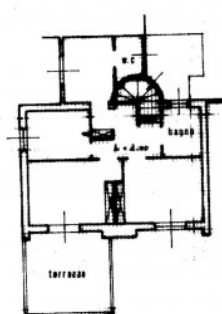
- Lecce (LE) - (+39) 0832 099369

lecce@cbitaly.it - <https://www.coldwellbanker.it/en>

VAT 04954530962



PIANOTERRA



PIANO 1°

Gruppo Bodini

□ LECCE - Via 95 Reggimento Fanteria, 11
 □ MAGLIE - Via Trento e Trieste, 22
 □ GALLIPOLI - Corso Roma, 7
 - Lecce (LE) - (+39) 0832 099369
 lecce@cbitaly.it - <https://www.coldwellbanker.it/en>
 VAT 04954530962