



COLDWELL BANKER

IMMOBILIARE NET/RE

Immobiliare NET/RE

Via Aurelia Tarquinia, 37 - 01014 Montalto di Castro (VT)

(+39) 0766 395292

## Agricultural Land for sale in Cellere Cellere

**€ 195.000**

**Ref. CBI105-1994-191**



**200.000 sq.m.**

LAZIO - VITERBO - CELLERE

AGRICULTURAL COMPANY WITH SHED

In the hills of Tuscia, in the municipality of Cellere, for sale a 20-hectare farm with a 400-square-meter shed above it.

The structure is in excellent condition. It is equipped with a bathroom, connected to the Imhoff pit and there are also warehouses in the internal part of the structure for the storage and processing of oil and other products. It is served by drinking water from the municipal line and supplied with electricity. Furthermore, there is the possibility of creating an artesian well.

The land is divided into 7 hectares of forest, which in 6 years will be ready for cutting, 13 hectares of arable land and a hectare of courtyard with 20 olive trees in full production.

The property is sold without equipment. The property is partially fenced with 2 entrances which can be accessed from dirt roads.

Immobiliare NET/RE

Via Aurelia Tarquinia, 37 - Montalto di Castro (VT) - (+39) 0766 395292

montalto@cbitaly.it - <https://www.coldwellbanker.it/en>

VAT 04954530962



Depending on family needs, there is the possibility of buying only the land without the shed or of buying, in addition to the entire company, another adjacent company of 20 hectares.

The property enjoys a splendid panorama overlooking the sea. The property is located 20 minutes from the sea and 20 minutes from Lake Bolsena.

The land is not suitable for a photovoltaic system.

In the arable land there are the PAC quotas which are transferred free of charge with the property.

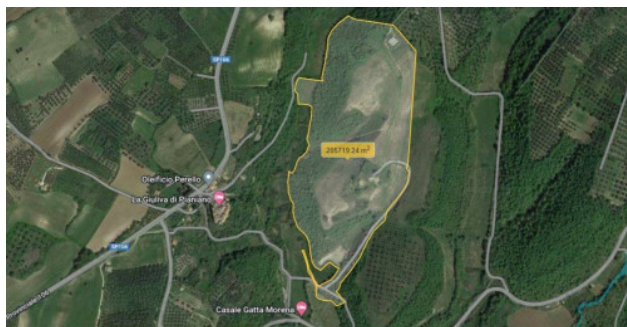
Contact me to visit this company.

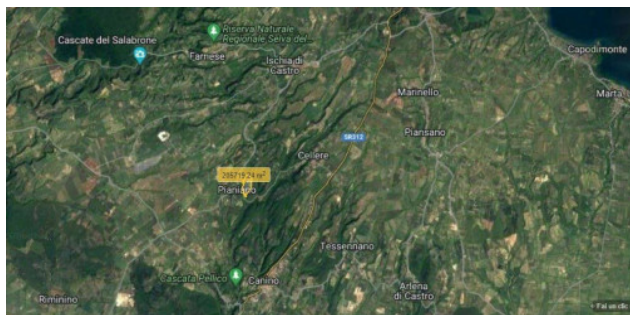
## Features

Property ID: CBI105-1994-191	Contract: Sale
Categoria: Agricultural Land	Address: Località Montemaria, Snc
Zip Code: 1010	Municipality: Cellere
Zona: Cellere	Total sqm: 200.000 sq.m.
Buildable sq.m.: 400 sq.m.	Farming sq.m.: 200.000 sq.m.









**Immobiliare NET/RE**

Via Aurelia Tarquinia, 37 - Montalto di Castro (VT) - (+39) 0766 395292  
montalto@cbitaly.it - <https://www.coldwellbanker.it/en>  
VAT 04954530962